



Pinpoint: Pennsylvania

Off the Beaten Path

*Fabulous
Fall Foliage*

- PA Breweries & Distilleries
- Unique Places, Unique Food
- Magical Mountain Playhouse

RELAX & ENJOY *Breathtaking Views & Adventure*



Shenango River Water Trail



John C. Oliver Multi-Purpose Trail
at Maurice K. Goddard State Park



Mercer County Golf Trail



Wine & Brew Trail

Explore Mercer County PA's Exciting Trails!

Upper Shenango River Water Trail

The scenic Upper Shenango River Water Trail provides 23 miles of easy canoe and kayak paddling or inner tube floating. There are seven nonmotorized boat launches so paddlers can choose several different lengths for their float. To help visitors enjoy the river, two companies, Carried Away Outfitters and Pymatuning Rentals and Information Center, make planning your water adventure easy.

John C. Oliver Multi-Purpose Trail

Maurice K. Goddard State Park features a 12.2 mile scenic multi-use paved trail that loops around Lake Wilhelm. There is a lot of nature to view from this trail so don't be surprised to see Bald Eagles, Osprey or Trumpeter Swans.

For more information, go to VisitMercerCountyPA.com, then click on *Outdoor Adventure*.

Mercer County Golf Trail

Mercer County is one of America's Top Golf Destinations offering a great selection of middle to high end courses, low green fees and a variety of accommodations centrally located to the courses.

To request a golf package quote, go to GolfMercerCountyPA.com.

Wine & Brew Trail

For groups looking for a different and fun way to celebrate birthdays, bridal parties or other special occasions – or would just love a relaxing weekend away – Mercer County, PA offers a Wine and Brew Trail in picturesque settings. With eight wineries, five breweries and a distillery in the area, this Trail experience is tailored to each group's wishes and includes a customized itinerary, transportation, free wine tastings, entertainment and assistance in arranging an overnight stay and dinner.

Getaways to Mercer County mean leaving the city behind and enjoying the beauty of lakes and scenic countryside. Visitors can enjoy a unique experience on a Wine & Brew Tour, stay in fabulous lodgings and dine out at great restaurants.

For more information, go to VisitMercerCountyPA.com, then click on *Wine & Brew Trail*.

VisitMercerCountyPA.com
724-346-3771

Visit
MercerCountyPA
YOUR SOURCE FOR TRAVEL PLANNING



Amazing Autumn!

Photo Courtesy of ANF Visitors Bureau

- 26 Hotspots for Viewing Spectacular Fall Color in the Allegheny National Forest
- 34 Autumn's Splendor in Photos
- 39 Timing Pennsylvania's Fall Color Peaks

in this issue

Welcome	1
Autumn Contributors	2
Become a Contributor	3
Autumn in Pennsylvania	5
Travel Tips	
Choosing the Right Hotel for Your Travel	6
Family	
Have a Super Family Fall Experience at Irons Mill Farmstead	8
Arts & Entertainment	
Mountain Playhouse: Magic in the Mountains	11
History	
Homewood Cemetery, Pittsburgh, PA: Historical, Architectural, and Educational	14
Unique Places	
Old Forge: Unofficial Pizza Capital of the World	18
Food & Drink	
Table 105 Takes Root	22
Outdoors	
Fall Foliage Feature	26
Thank You	54



Spotlight On...

Craft Brews and Spirits Across Pennsylvania	41
Oktoberfest: Celebrate with Breweries and Distilleries in the Lebanon Valley	46
Adams County Pour Tour On Tap in Gettysburg	50

Pinpoint: Pennsylvania is a publication of Pinpoint Publishing, LLC.

Editors-In-Chief: Lynda Stewart & Jason Krynski

Editor: Jason Krynski

Creative Director: Lynda Stewart

Sales Consultants: Joanne Cain & Kim Guthrie

Printing: Gazette Printers

Digital: Higher Images

Marketing: Brand Accelerator

 **Pinpoint:**
Pennsylvania
Off the Beaten Path

welcome

Vision

The vision of Pinpoint: Pennsylvania is to provide an entertaining and educational publication, while forming a community focused on sharing unique Pennsylvania experiences. We seek to help gain increased exposure for the lesser known and contribute to their success, and provide unique perspectives on the more familiar.

As Pennsylvania natives, we are proud to not only play a part in stimulating the state economy by encouraging travel, but we are also enthusiastic about educating residents and visitors alike of the unique experiences that lie within the state.

Mission

The mission of Pinpoint: Pennsylvania is to provide a platform for Pennsylvania hospitality and tourism businesses, as well as aspiring content contributors, to have a public forum in which they can share experiences, information, ideas, and opinions.

By utilizing user-generated content, we will be giving exposure to businesses and contributors who may have otherwise gone unrecognized. Providing residents and visitors alike with this kind of insider information will help readers plan unique activities and trips throughout Pennsylvania.

Welcome to the autumn edition of Pinpoint: Pennsylvania. We hope that you continue to fall in love with the magazine and enjoy our latest issue. Our team has been very hard at work uncovering all that makes Pennsylvania unique, and we are thrilled to share our latest discoveries with you.

The first thing you may notice is that our tagline has changed from “A Travel Magazine by the People for the People” to “Off the Beaten Path”. While Pinpoint: Pennsylvania continues to be a reader supported publication, we feel that we are on the path to becoming something more.

The reception of issue number one was nothing short of overwhelming. People found the subject matter unique and eye-opening. While we will continue to share widely appealing content, such as our Kennywood article, we aim to focus attention on lesser-known topics such as the Kinzua Bridge. We are finding that these articles make the most impact and we want to continue on this trend.

In the case of Kinzua, many readers shared that they had never heard of it, or if they had, they didn't know very much about it despite being Pennsylvania residents. It is for this reason, that we continue to encourage writers throughout the state, visitors who have had great experiences, and business owners and partners of these unique locations to share with us. Our need for contributions cannot be understated. Those interested can contact us at info@pinpointpennsylvania.com

With all that being said, Lynda and Jason, along with all of the team members at Pinpoint: Pennsylvania, encourage you to enjoy this autumn edition. Go out and make some memories... and share them with us!



Contributors

After retiring from teaching to raise two sons, **Kim Adley** created her 23-year old professional storytelling business, Characters by Kim. She also engages audiences in her new business, Passport to Pittsburgh, LLC, a custom tour company for Pittsburgh and beyond. Most recently, Kim is writing a children's book series: "Passport to Pittsburgh for Kids". She is also a staff columnist for "Inspiring Lives Magazine".

Leah Bell is the Director of Communications at Irons Mill Farmstead. She has a bachelor's degree in Education from Westminster College in New Wilmington, PA. Following graduation, she taught middle school and eventually made the switch into medical sales/marketing. After taking a few years off to stay at home with her three boys, she started her position at her favorite place around, Irons Mill Farmstead, planning events, designing field trip programs, and managing the admissions department.

Linda Devlin moved to the Allegheny National Forest, Bradford, Pennsylvania over 30 years ago, and fell in love with the beauty of the forest. Devlin works as the Exec. Director of the Allegheny National Forest Visitor Bureau, where she can share her passion for the forest daily with visitors from around the world.

Heather Omahne is originally from Old Forge, PA. Now lurking in the 'burbs of the 'burgh. Quirky, hard working, excels at music trivia, independent and free. Corporate scumbag sales rep and "retired" yoga instructor. Direct communicator. Sassy and sarcastic. A little hippie, a little hood.

Angela Todd wants to help YOU make history! She is a cultural historian who helps women and their families build legacies by recording family stories. She's determined to help families get their stories recorded and saved in repositories -- to increase the raw materials from which history is made. With degrees in cultural and women's studies, and almost two decades as an archivist, she's living her dream capturing untold stories. Find her at www.angelaltodd.com

Mary Weigley is the Administrative Assistant at Visit Lebanon Valley. She holds a Bachelor of Arts degree in American History and focuses her freelance writing on her love of history.

Originally from Erie, Pennsylvania, **Carl Whitehill** moved across the state and is now the Director of Communications with Destination Gettysburg. Over the past 10 years, he's worked with journalists from around the world to tell the story of Gettysburg's rich Civil War history as well as stories "beyond the battlefield." He enjoys running around the Gettysburg countryside in search of adventures with his family.

Do you like to write?

Do you take amazing photos?

Do you love Pennsylvania?

Share Your Passions and Become a Pinpoint Content Contributor

Pinpoint: Pennsylvania is a User-Generated Content based publication. All of our content comes from people who love our state, including everyone from the amateur photographer out for a Sunday drive to the experts in the county tourism offices. We rely on our contributors to help us discover the best Pennsylvania has to offer.

Do your friends and family look to you for ideas about outdoor adventures?

Do you know where the best places are to get a 5-star meal, to get a handcrafted milkshake, or the best local wine?

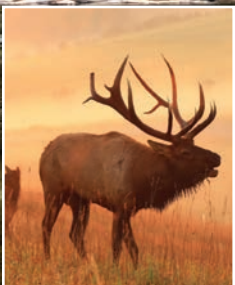
Are you the master weekend road trip planner?

Send in your articles and photos
for use in an upcoming issue at
PinpointPennsylvania.com today!

Endless Adventure

Autumn is a particularly beautiful and exciting season to visit the Pennsylvania Great Outdoors region. Witness dramatic battles between bull elk during the rut, surround yourself in eye-popping fall foliage, explore the forests on ATV, snowmobile, or cross-country skis, and enjoy family-friendly festivals with something for everyone.

Any time of year, you can visit a world-famous groundhog, hike beneath some of the tallest trees in the north-eastern United States, find intriguing history throughout many charming small towns, and sample the area's unforgettable flavors at a wide range of wineries, breweries, distilleries, and restaurants. Come to the Pennsylvania Great Outdoors and find your endless adventure.




PENNSYLVANIA
GREAT OUTDOORS
VISITORS BUREAU

VISITPAGO.com
(814) 849-5197

Autumn In Pennsylvania

Autumn is a time of transformation. You can snuggle under a blanket and enjoy a nice hot cup of apple cider. If you prefer, you could sit back and read a book by a campfire. Or maybe take a weekend trip to a mountain top cabin to enjoy the fall foliage. Whatever you choose, it's certainly time to sit back and take a breather from the crazy summer schedule.

Choosing the Right Hotel for Your Travel

By Jason Krysinski

How do you choose a hotel to stay at? Price? Location? Amenities? Choosing the right hotel is an extremely important aspect of traveling. And not all hotels are made alike.



Photo Courtesy of Hampton Inn & Suites Grove City, PA

It's easy to jump on the internet and find the cheapest hotel available. But choosing the right hotel is far more complicated. Most travelers don't fully understand the different categories of hotels and what they are getting for their money.

They may choose a four-star hotel on a discount website only to find out that they don't get the complimentary breakfast that was included with a previous stay at a lesser rated hotel. We hope that we can shed some light on this mystery.

Let's start with **full service hotels**. Examples of these hotels would be Hyatt Regency, a Hilton Doubletree, or a Marriott Renaissance. On average, you will pay more for these hotels, but if you manage to snag a discount, you should not expect a free breakfast. Typically, you can expect professional service, in-room dining, and a full service, ala-carte restaurant. You will get a classic and traditional hotel, that primarily caters to travelers who want that kind of experience.

Currently the largest category of hotels would be the **select or limited service**. These hotels often come at very discounted rates and include some amenities that you might not expect. Typically, a free breakfast is included daily with your stay. Additionally, you will usually find a refrigerator and a microwave in the room. Hotel companies have made major moves in this category in recent years. Due to the smaller staffing models for management team, front desk staff, and housekeeping, the hotel can offer more at a more affordable price to their guests. Hotels of this type include Hyatt Place, Microtel by Wyndham, and Hampton Inn.

While you may get more amenities at these hotels, sometimes it can be a gamble in staff service. You may want to check their ratings and reviews before you visit. During busy periods, these hotels see a lot of business and it takes a special staff to be able to manage the influx in business.

The final category is the **extended stay** variety of hotel. This type also falls within the select or limited category, but they tend to have more amenities in the guestroom that will benefit you during your stay. These hotels, such as the Residence Inn by Marriott or the Hawthorn Inn and Suites by Wyndham, afford you the luxuries of home. Most times, you will have a full refrigerator, a larger microwave, and stove top. You will also have pots and pans, silverware, and plates.

Something to know, before you go, is that these hotels often offer additional pricing discounts to guests who are staying longer periods of time. Feel free to ask them if staying an extra day or two will make a difference.

We have covered the most common types of hotels, but of course there are more. If you are traveling soon and have any questions, please feel free to reach out to Practical Insider Travelers Tips at info@pinpointpennsylvania.com

Until next time, be safe and happy traveling!

Traveling can be tricky business and it's always good to be prepared. In each edition of Pinpoint: Pennsylvania, you'll find practical insider travel tips shared by industry experts that will help everyone become a more savvy traveler.

Have a Super Family Fall Experience at Irons Mill Farmstead

By Leah Bell

Photos Courtesy of Irons Mill Farmstead

Voted #1 by kids & parents everywhere, Irons Mill Farmstead is one of America's fastest growing fall fun destinations!

Come see why families across the region flock to Irons Mill to experience a day that lasts forever!

Located in scenic, Amish Country - New Wilmington, Lawrence County - we are a short drive from Pittsburgh & Youngstown. Enjoy any of our 35+ attractions, including hayrides to the pumpkin patch, 10-acre corn maze, pig races, ziplines, 9 food venues, and 70 pounds of candy being shot from a cannon!





This year, IMF is going to be extra “super.” Superheroes from all around will be assembling at the farm, and YOU can meet them! In addition to many other events and activities, we will have character meet-and-greets on SIX Saturdays during the season!

Irons Mill Farmstead is the best place around to host a fall event! Have a birthday party under a party tent or around a campfire, host a church family day out, bring a scout group, plan a corporate event, or just grab a group of friends and receive a discounted admission price for groups of 20 or more guests! Campfires are available for rent to individuals or groups.

The farm is not just fun, but it’s educational, too. We offer field trips on Thursdays and Fridays at 10:00am. Field trips are open to school groups and homeschool groups. Students can attend learning stations for specific age levels and then use their new knowledge to answer questions and navigate through the mini-corn maze. No test has ever been more fun!

And who doesn’t love fireworks? We have professional fireworks shows on the following Saturdays: September 15, 22, 29, October 6, 13, & 20. All fireworks shows begin at 8pm.

Irons Mill Farmstead is the ultimate family fall experience. We look forward to seeing you!



Plan Your Trip...

Visit www.ironsmillfarmstead.com for information, event dates, group reservations, or directions.

Opening Day: Saturday September 15

Hours:

Thursdays: 1p - 7p • Fridays: 1p - 10p

Saturdays: 10a - 10p • Sundays: 10a - 7p

**Columbus Day - Monday, October 8: 10a - 7p

Last Day: Sunday October 28



Photo Courtesy of Mountain Playhouse

Mountain Playhouse: Magic in the Mountains

Story and Photos by Kim Adley

Each summer and fall for 80 years, magic has been being made in the Laurel Highlands of Pennsylvania at the non-profit Mountain Playhouse theater in Jennerstown, PA.

That's when a company of professional actors, directors, designers and technicians from around the country gather to create a season of theater.

They do this all in a wonderfully unique and creatively repurposed 1805 gristmill located on a peaceful Stoughton Lake. It's a picturesque setting, worth the visit alone, but what is happening inside this charming theater is the true magic. The "Broadway quality" productions each season operate under a CORST (Council of Regional Stock Theaters) and contract with Actors' Equity Association. It is one of only eight professional summer stock theaters still operating in the United States today.

This coming season 2018-2019 will mark the 80th anniversary season of the theater founded in 1939 by James Stoughton. Stoughton and his sister owned a nearby sandwich shop, now the Green Gables Restaurant, and thought a mountain theater might draw more guests to the road side sandwich shop.

It certainly did! More than 25,000 guests from across the region and beyond visit the Mountain Playhouse each season and are treated to live professional theater that will make them laugh, cry and yearn for more.



The theater's season runs from June to October producing six shows with 16 performances each that range from drama, to comedy to musicals. The recent production of "Million Dollar Quartet" provided the characterization and music of Elvis, Jerry Lee Lewis, Carl Perkins and Johnny Cash to delighted audiences. During each of the six show runs, the theater offers some special events for theater goers:

"Opening Night Celebrations" follow the opening night performance with a complimentary party for the audience to mix and mingle with cast members.

"Talkback to Us" Sundays follow the first Sunday matinee of each run and invite the audience to visit with the cast and producer for an informal chat about the production.

"Under 21 Nights" occur on Wednesday nights and invite younger theater patrons to enjoy a show at a student friendly price. And each May, the theater hosts more than 4,000 school children from 45 different elementary schools to attend a live theater performance for their first time.

Executive Director of Mountain Playhouse, Patty Carnevali, invites everyone to "Come, be a part of the fun and the 80th season!" and reminds us that season subscriptions and single tickets are available for purchase and bus groups are most welcome. When you visit, don't forget to stop at "The Snack Veranda" during intermission for some refreshments and then "sit a spell" in the wooden Adirondak chairs that overlook the lake. The beautiful view, delicious gobs, cookies and other locally baked goodies are all part of the Mountain Playhouse magic too.



Plan Your Trip...

Mountain Playhouse
7690 Somerset Pike
Jennerstown, PA 15547
814-629-9220
www.mountainplayhouse.org



Homewood Cemetery, Pittsburgh, PA: Historical, Architectural, and Educational

*By Angela Todd
Photos by Jennie Benford*

Ask Jennie Benford, Director of Programming for the Homewood Cemetery Historical Fund about the cemetery, and she describes it as a “very family-friendly place”. As a matter of fact, her son learned math in the cemetery by subtracting dates on the tombstones to discover the ages of people when they died.

She says that not only do families come to pay their respects to their loved ones, but people also come to observe the wildlife, including deer, snakes, turtles and hawks.

One of the nicer aspects of walking through is the ability to allow children to wander off on their own. It's safe enough to allow them to independently sightsee and wide open enough to be able to keep an eye on them while they explore.

There are also beautiful statues and mausoleums to admire as you stroll along. Anyone interested in architecture, stained glass, and the Gilded Age will find a visit

worthwhile. There are very few places that cover so much ground of history.

Ahead of its time, the Homewood Cemetery, a private, nonprofit institution has been non-denominational and non-discriminatory since its founding in 1878. Because of this, a significant portion of the story of Pittsburgh's 20th century African-American community can be found in the cemetery.

Expected to operate for the next 100-200 years, the cemetery was also designed to be an urban green space, and it still functions that way. People can be seen jogging, riding bikes, or just meditating in tranquility.

Interactive Experiences

In preparation for the 100th anniversary of the 19th amendment, they have been doing a lot of research on people who were involved in the drive to get women the right to vote. They are currently offering a tour called “Audacious Pioneers: The Ladies of Section 14”. This walking tour focuses for the first time on women in the high society sector, allowing a tour that crosses lines of class and race.

Ladies featured on this tour include:

- A world famous opera singer.
- A palm reading Countess from Coshocton, Ohio.
- A politically minded widow with a fondness for cars.
- The proprietor of a successful African American “Tourist House”.

In addition to this tour, the cemetery also offers pre-printed self-guided tour booklets. Drop by the office and pick one up along with a map, and do as much or as little exploring as you like. For a more unique experience, contact Jennie, and for a fee, she will customize a program to your specific area of interest. The custom tours are \$10 per person and the funds go to the Cemetery Historical Fund.

No Halloween tours are allowed, so don't come in costume. After all, they are an active cemetery and they need to be respectful of families and their loved one's final resting place.



Photo by Angela Todd

Jennie says working at the cemetery she has her dream job – indeed, she has volunteered there since 1992. She says that there are 78,000 people at rest throughout the cemetery. With that many burial sites, there is a wealth of knowledge and history in the infrastructure of data that goes well beyond the physical presence and beauty of the area. She will continue to enjoy each day she spends here and encourages others to experience it as well.

The Homewood Cemetery Historical Fund is a 501(c)(3) charitable trust established to preserve the cultural, historical and natural resources of Pittsburgh's Homewood Cemetery. HCHF also offers tours, talks, exhibitions and other educational programs for both students and adults.

Plan Your Trip...

For more information, keep tabs on the Homewood Cemetery Historical Fund Facebook page, or visit thehomewoodcemetery.com

Don't Miss...



Winter In Pennsylvania

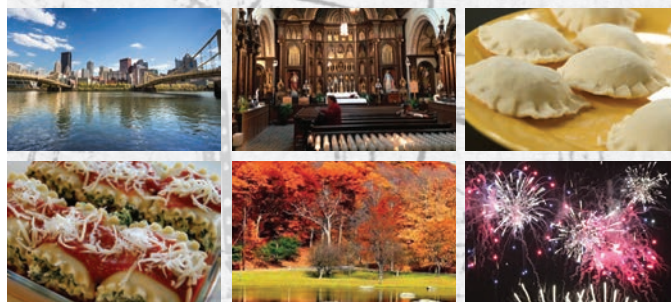
Chill with
Pinpoint: Pennsylvania!

Coming in late December:
Winter Escapes &
Recreation
Fun Family Activities

Subscribe today at
[PinpointPennsylvania.com!](http://PinpointPennsylvania.com)



Custom tours of Pittsburgh and beyond



Experience the "Tourism Trifecta"
Knowledge, Experiences and Fun

To schedule your tour or for group
rate information, contact Kim Adley
at **412-298-0409** or visit online:
www.passporttopittsburgh.com



Old Forge

Unofficial
Pizza Capital
of the World

Story and Photos by Heather Omahne

unique places

Pizza –

that ubiquitous foodstuff.

Ask anyone and you'll get a passionate response about why a certain place should be a destination on your bucket list. There's a certain level of comfort that comes from indulging in your favorite pizza.

My home town is Old Forge in northeast PA. Known as the 'Unofficial Pizza Capital of the World', Old Forge has its own unique, delicious style of pizza that I have enjoyed my entire life. But Old Forge has been enjoying this style of pizza for many years. Records from the now dissolved Old Forge Pizza Committee date the origin of Old Forge Pizza to the early 20th century.





The history of Old Forge pizza goes loosely like this – in the early 20th century, there were different speakeasies around the Anthracite mining towns near Scranton, PA to service the miners when they finished their shifts. Each ethnicity has their own gathering place and in Old Forge, a version of homemade red wine was served. It is told that in one of these establishments the first lupitze, a basic staple in the Italian and Sicilian immigrant diet consisting of basic pizza dough and a few savory toppings, was given away to encourage the miners to spend more time in the watering holes. The question of who served the first Old Forge pizza is still the stuff of legends in town. The cafes then began charging by the cut so the miners could take pizza home to their families. Trays were originally packaged on a single piece of cardboard with toothpicks holding up the newspaper wrapped over it for early carry out customers.



I moved to suburbia south of Pittsburgh when I was 12 and the first time we ordered white pizza, I was shocked to see a round pizza that was crust, cheese and topped with thinly sliced tomatoes. It was all very confusing, the shape and tomatoes were not what I expected and the cheese was a mozzarella blend.

Old Forge pizza is a culture with over 10 cafes, where every owner has respect for each other. Old Forge pizza comes with its own vernacular. You can order a cut, not a slice or piece, or a tray, not a pie, of red or white. Red is crust, sauce, cheese, seasonings and is often served with thinly sliced onions, with shrimp and hot peppers being the most popular topping. White pizza comes in two styles, open faced and double crust. A tray of open face is crust, cheese and seasonings. Double crust is a layer of the cheese blend between two crusts, with the top crust coated in olive oil, seasonings and

more of the thinly sliced onions. Double crust has the option to be stuffed with broccoli or spinach. One of the original white lupitze styles was crust, olive oil, seasonings and anchovies.

What makes Old Forge pizza different, and delicious, is the distinct crust and cheese. The crust, made from fresh dough daily, may look like a traditional Sicilian style, but is much lighter with origins in traditional Italian bread recipes. It's crispy on the outside, chewy on the inside, and some original recipes include secret family ingredients like ground up anchovies. The melty cheese is a closely held secret where each cafe' has their special blend that may include white American, brick, and other nontraditional pizza cheeses. When you bite into a cut of white pizza, first you experience the crunch of the crust, taste the savory herbs, then a rush of gooey, scrumptious cheese follows. As you chew and wonder if anything could simultaneously be so light yet so rich, you may notice the cheese is sticking to your teeth. It's ok, the person next to you is experiencing the same thing.

Since living in the Pittsburgh area, I've shared the experience of Old Forge pizza with friends and coworkers by transporting trays of par-baked across the state when I return from my annual visit. Every friend I've shared with agrees it's unique and lives up to the legends I've told. Cafes have offered FedEx and UPS services to help expatriates curb their cravings.

If you're traveling through NEPA, make a stop in Old Forge and try it for yourself along with other Italian specialties like homemade pasta; tripe, which is cooked down lining of cow stomach and tomato sauce; and soffrito, which is pork butt, hearts and livers braised in oil and white wine seasoned with crushed red peppers, onions, garlic and other secret ingredients. Arcaro's and Genell's, Revello's, Elio G's, and Café Rinaldi all serve trays upon trays of

pizza. My personal recommendations are totally biased based on family ties. If you are looking for the traditional experience, try Salerno's Café, located at 139 Moosic Road. In addition to red and white pizza, you'll find tripe, soffrito and homemade fusilli. A more modern twist can be found at Cusumano, 432 S. Main Street. In addition to pizza, they offer a fresh twist on classic Italian cuisine including a wild boar ragu, arancini, and seasonal options like fried zucchini flowers, often made with ingredients from local farms.

Mangia!



TABLE 105 TAKES ROOT

Story and Photos by Linda Devlin

Table 105, a new steak and seafood restaurant, offers fresh and delicious dining options created from sustainably resourced, quality ingredients. Their décor features huge slices of native Black Cherry Timber playing tribute to their location in Kane, Pennsylvania, the Black Cherry Timber Capital of the World. A tree seems to grow through a banquet table as it stretches to the ceiling helping to give this restaurant an authentic sense of place as it is located at the edge of the Allegheny National Forest in northwestern, Pennsylvania.

Owner Rikiya Tanaka, has a passion for food, and the gift of hospitality.

His vision for Table 105, is to bring a new style of restaurant into the area. A place where those who delight in great food, can enjoy a fine meal, with a glass of wine, while relaxing with family or friends. Young professionals, couples and families, now have a local restaurant which understands the style of cooking where the emphasis is on fresh. Walk into the restaurant and you immediately are submersed in a relaxing atmosphere of fine food, prepared with care, with a goal of delighting the one's palate.

Riki has left nothing to chance. He pays attention to the minutest detail. "Our goal is to have the freshest seafood, the most flavorful steaks, and a specialty bacon which will sear its flavor into your food memory."

His starting point for all his entrees is fresh ingredients. "In my professional kitchen, the walk-in cooler is much bigger than the freezer, because the focus is on fresh," explains Riki. "I have the freshest seafood in the county. If you enjoy fresh fish, this is the restaurant for you." Riki expands on his seafood, "I know where the seafood served in my restaurant is caught, the name of the fishing boat, and the captain's name. Our seafood is air-shipped from the coast, and our salmon is scaled, sliced, and prepared to individual order in-house."

Talking about his choice of bacon, selected for the restaurant, brings a smile to his face. This is a man who knows his bacon. He has sourced a delicious cold smoked applewood bacon. This is a specialty bacon with very little fat but big, big flavor.

Chef Coby Butler

Of course, one of the most important ingredients in a successful restaurant is the Chef. Chef Coby Butler has multi-layered culinary skills, developed over many years of experience. This includes time spent studying culinary arts at Drexel University, and Johnson & Wales University- Charlotte. He describes himself as a chef/farmer/adventurer with a journey of learning about cooking and growing food, from charcuterie to juice cleanses and lettuce to trees.

As a child, his mother and the other female relatives would chase him out of the kitchen. It is his Uncle Joe Brunelli, a chief in New York, who first inspired Cody's passion for the culinary field. It all started with a plate of Uncle Joe Brunelli's spaghetti and meatballs. Intrigued by food preparation at a young age, Cody started watching cooking shows. While watching Iron Chef, he would be writing down hints and watching the techniques. From this interest, he pursued his passion to become a chef.

When you review his experience, it is like uncovering the many subtle layers of melded flavors necessary to produce a fine gumbo. As an



intern, at Blue Hill at Stone Barns, Cody learned about sauces, foams and gels, then as an Entremettier at The Lacroix at the Rittenhouse Hotel in Philadelphia, he worked with a range of different molecular gastronomy ingredients, helping to create dishes for chefs table menus.

Moving to Chicago, he worked on the grill and as a butcher at Taxim, where he developed new dishes and specials, fabricating with chicken, lamb, rabbit and octopus. At Aldino's and Aldinos Market, he perfected pizza dough, bread doughs, and making fresh pasta. Also, in Chicago, Cody was the Chef at the Boiler Room Logan Square, and later the AM Sous Chef at Table Donkey and Stick where he fabricated with cow, hog, lamb, duck quail and rabbit.

Off to Hawaii, to learn about juices and nut milks, flavored and brewed kombucha, elixirs and wellness shots. Next stop was working at Tai Shan Farms, North Country Farms Kauai, and Anuene Farms Hawai'i to learn about beekeeping and organic farming. Then on to the position of line cook, at The Watergate Hotel in Washington, D.C. Metro Area, at King Bird Restaurant.



Table 105's Menu

Easy, concise headings - From the Start, From the Garden, From the Farmer, From the Fisherman, From the Saucier, South of the Border Tacos and Pizzas make it easy to focus your eyes where your appetite leads.

I was intrigued with the menu listing- Peanut Butter Burger with Applewood Smoked Bacon, Cheddar, Fried onions, Peanut butter honey spread; a ½-pound burger with fries, house chips on a butter brioche roll. How could I not order something with the restaurant's specialty bacon? So, I ordered, and I'm still trying to describe the unique savory flavor you get with each bite of burger. The burger is served up with a heavy-duty knife pinning the burger to the plate. Taste served with style-simply delightful, all at the extremely reasonable price of \$13.

Other entries we enjoyed at our exploration dining at Table 105 include the Hummus-cut vegetables with fire roasted red pepper hummus with caramelized onion, French onion soup and the Baja or fish taco. Let's start with the hummus-delicious, fresh and tasty. French onion soup had exceptional depth of flavor with mounds of provolone cheese. The Baja taco was blackened Mahi Mahi, avocado, black bean corn pico and Tequila Lime Crema-memorably delicious.



Restaurant Facts

The restaurant opened June 23, 2018. The casually upscale bar seats 28, with the full restaurant able to seat 118. In the center of the dining area a custom table, handcrafted of eastern pine, is rooted to the floor, as a tree trunk, reaches upward to the ceiling. The table was crafted locally in Eldred, Pennsylvania. As a center focal point, behind the bar, an artisan crafted a wooden tile application. They are similar in appearance to subway tile, but at Table 105, this display is crafted from a variety of Pennsylvania hardwoods.

As the chef trains the staff, expanded dishes will be added to the menu-but not before they reach perfection.



Plan Your Trip...

Table 105 is located at 105 North Fraley Street (Rt. 6) Kane, PA 16735. You can phone ahead for take-out, or to have your food ready when you arrive. Seating times are Sunday - Thursday 11 a.m. to 9 p.m.; Friday and Saturday 11 a.m. to 10 p.m. The bar is open daily till 2 a.m., except on Sunday's when the bar closes at midnight. A menu for Table 105 is posted on Facebook.

Autumn Hotspots

FOR VIEWING
SPECTACULAR FALL COLOR





Autumn is the perfect time to enjoy the spectacular colors of fall as the leaves change to ruby red, blazing orange, and brilliant gold.

Pack your bags, hiking boots, binoculars and camera—this is going to be a colorful journey.

*By Linda Devlin
Photos Courtesy of ANF Visitors Bureau*

Allegheny National Forest – Fall Really is Bigger Here

The Allegheny National Forest (ANF), located in northwestern Pennsylvania, offers tree lined, two-lane highways, where one car in front of you is considered heavy traffic. Covering over 513,000 acres, the Allegheny National Forest is a prime destination for those seeking fall color. The Kinzua Sky Walk at the Kinzua Bridge State Park, the Longhouse Scenic Drive, and the section of Pennsylvania Route 6 from Kane to Port Allegany offers amazing fall colors and scenic vistas. Prime color is usually the last two weeks of September and the first two weeks of October.

“Timing and quality of fall color varies by species. Maples reach peak color earlier in the season and are more vibrant than oaks. Folks can expect to see more color, and earlier color as they travel away from the Allegheny Reservoir and the major river corridors,” explains Joshua Hanson, District Silviculturist, Allegheny National Forest-Bradford Ranger Station.

“There are over 80 species of trees on the ANF.” Joshua expounds, “The upland hardwood type includes red maple, black cherry, black birch, yellow poplar, white ash, basswood, and/or cucumber tree. The Allegheny hardwood type includes a similar mix of species, but black cherry, white ash and yellow poplar are more abundant. The oak types include several oak species, e.g., Northern red oak, white oak, chestnut oak, black oak. The northern hardwoods including sugar maple, American beech, yellow birch, and hemlock.”





LONGHOUSE NATIONAL SCENIC BYWAY

The Longhouse National Scenic Byway is considered Pennsylvania's most scenic drive by US Today. The byway circles the Kinzua Creek Arm of the Allegheny Reservoir through some of the most beautiful scenery on the ANF. It is a 36-mile loop from Kane. Kane is easily accessible from Pittsburgh. Drive I-80 east, exit onto Rt. 66 north, the trees along this roadway form a colorful canopy.

Approaching Marienville on Rt. 66, you can see the true plateau nature of the Allegheny Highlands. Here miles, from the major creeks and rivers, the terrain is gently rolling. The Allegheny National Forest Marienville Ranger Station is on the left, 1.5 miles past the center of Marienville. Here is where you can find plenty of useful information such as leaf identification books

and topo maps. Follow Rt. 66 north to the village of Kane.

Travel Rt. 6 east of Kane to the entrance of Rt. 321 north. The actual start of the scenic byway is about eight miles from Kane to the intersection with Longhouse Drive. Continuing on Rt. 321 north you will pass Red Bridge. This is the head of the Kinzua Creek Arm. Park the car



and take a stroll to the edge of the Reservoir for great views of the fall color reflected on the water.

Cabin rentals, in tiny house style, campsites for RV and tenting are available. Reservations can be made at the federal reservation site: www.recreation.gov, or by calling 1-877-444-6777. If you are seeking local information, go to www.alleghenysite.com. Red Bridge is also one of the trailheads for the linear 7-mile Kinzua Valley Trail, great for hiking or biking. The trail follows the banks of Kinzua Creek, has a crushed limestone surface and terminates at Westline. Here the Westline Inn offers beverages, food and lodging in a rustically elegant atmosphere.

Back to Red Bridge, time to return to your scenic byway, continue heading north. The roadway will begin to rise into the highlands through a beautiful forest of hardwoods and hemlock, a trailhead for the North Country trail, the longest foot trail in America will be on your left. Nearing the top of the plateau, you will pass the Old Powerhouse

Museum an original timepiece from the glory days of oil in this region. The Bradford Ranger Station is located at the intersection of Rt. 321 and Rt. 59. You can find public restrooms, a wildlife display, small gift shop, and virtually any information about the ANF here.

Turn left on Rt. 59 toward the Allegheny Reservoir. Along this stretch of the loop, you pass the trailhead for Morrison Trail. This trail has two loops, the 5.3 mile loop Morrison Trail loop, which passes boulder fields, and the 8.3-mile Rimrock Trail Loop, which drops to the shore of the Allegheny Reservoir.

About a mile past the Morrison Trailhead is the entrance to Rimrock, a magnificent rock outcrop and overlook above the Allegheny Reservoir. This area offers picnic areas and hiking trails. Be sure to stop and walk the short trail to the developed overlook—the views will be stunning.

Return to Rt. 59, you will pass the Kinzua Wolf Run Marina

KINZUA SKY WALK - KINZUA BRIDGE STATE PARK



on your right, just before crossing the Allegheny Reservoir on the Morrison Bridge. At the intersection with Longhouse Drive, is Kinzua Point, a great photo opportunity of the fall foliage and water vistas. Leave Kinzua Point and turn onto Longhouse Drive. The access road to Jakes Rocks is about a mile up Longhouse Drive. This impressive rock outcrop offers a spectacular vista over the Allegheny Reservoir.

Longhouse Drive continues a winding course high above Kinzua Creek Arm, passing the Dewdrop and Kiasutha Recreation areas before ending back at Rt. 321. Turn right to return to Kane.

Absolutely Stunning! Wow! The Kinzua Sky Walk - “One of the top 10 most scenic skywalks in the world,” extends 624 feet into the Kinzua Gorge, at a height of 225 feet. The forested hillsides of the Kinzua Gorge are a patchwork quilt of many colors—courtesy of Mother Nature. Located at a higher altitude, away from the Reservoir, the fall color arrives earlier at the park.

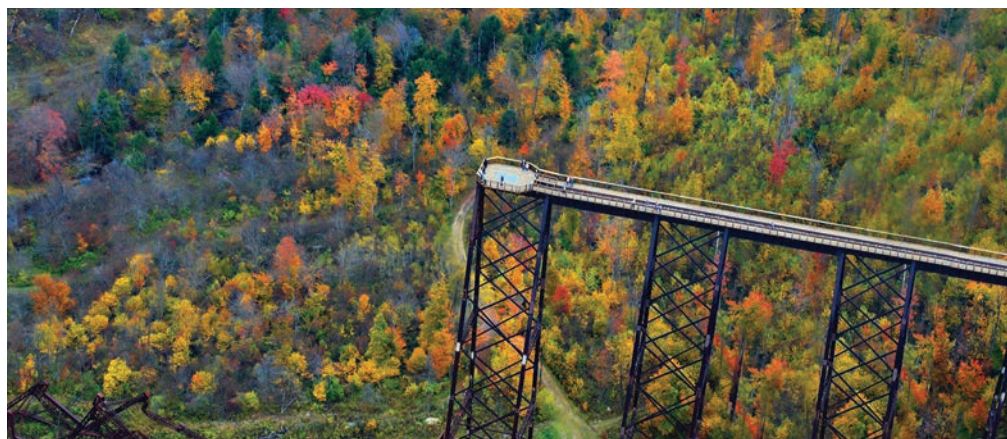
There are two hiking trails at the park—Kinzua Creek Trail winds down the steep side of the gorge. The General Kane Trail is a shorter, more family friendly trail. The park offers picnic areas, hiking and biking trails, and a pavilion which may be rented for special occasions. More than one marriage proposal has happened on the Kinzua Sky Walk.

The Kinzua Bridge Visitors Center, at the park, is a 11,000 sq. foot building with two floors of interactive exhibits. Interpretive displays showcase

the “can do spirit” of the men who built the first Kinzua Viaduct in 1882. Handicapped parking is in front of the building, and public restrooms are easily available. The exhibit halls and the skywalk are both handicapped accessible.

A newly expanded gift shop— the PA Wilds Conservation Shop, features artisan works and handcrafted items from along the PA Wilds and the PA Route 6 Artisan Trails. Here you will find photography books on the Pennsylvania Wilds, the “Great Kinzua Bridge” book, handcrafted jewelry, pottery, and a variety of locally sourced food items. The Kinzua Center and gift shop are open daily from 8 a.m. to 6 p.m.

The Kinzua Bridge State Park, Kinzua Sky Walk and Kinzua Bridge Visitors Center are located at 296 Viaduct Road in Mt. Jewett, Pennsylvania. The park is open daily from 8 a.m. to dusk. Admission is free.



PENNSYLVANIA SCENIC ROUTE 6

Driving Route 6 offers a glimpse into authentic America. Small towns, family-owned shops and restaurants, and natural scenic beauty add to the lore of an area described by National Geographic as “one of the most scenic drives in America.”

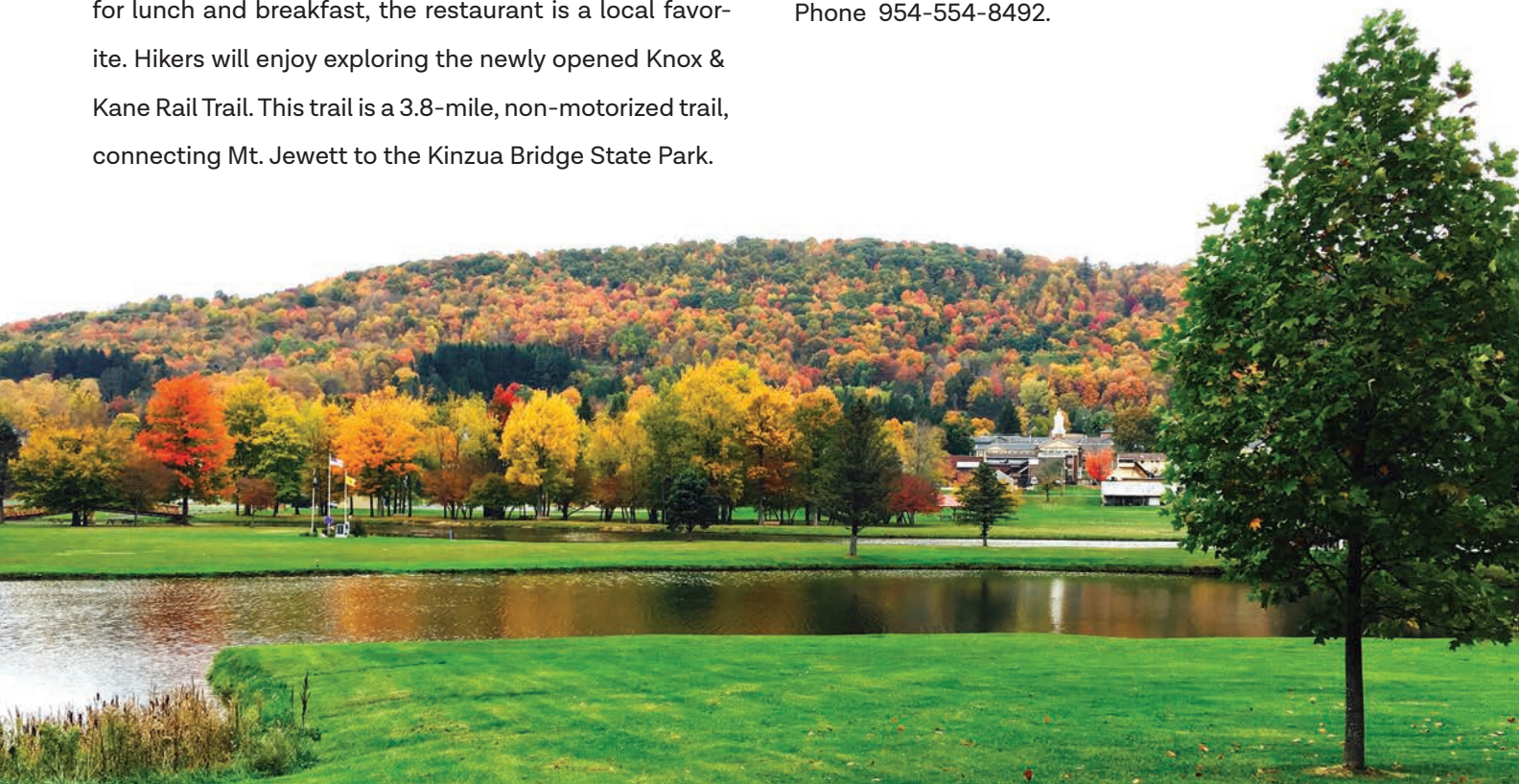
Traveling from Kane, you can turn north onto the Longhouse National Scenic Byway, or turn east to explore the sites including the Kinzua Sky Walk. From Mt. Jewett, Rt. 6 continues toward Smethport, and then into Port Allegany, located at the edge of McKean County.

Each small town has an individual flavor.

Mt. Jewett was settled by Swedish immigrants who worked in the forests harvesting timber for the expansion of America’s westward movement. Nebo Chapel is patterned after a church in Sweden, and a Swedish Festival is held annually in August. To catch a taste of this Swedish past step into Kafe Sol for a tasting of their many Swedish breads and home-baked items. Their cinnamon buns are just like the ones my Grandmother used to make. Open for lunch and breakfast, the restaurant is a local favorite. Hikers will enjoy exploring the newly opened Knox & Kane Rail Trail. This trail is a 3.8-mile, non-motorized trail, connecting Mt. Jewett to the Kinzua Bridge State Park.

Smethport is a charming Victorian village. Most of the homes were built by the Lumber Barons during the late 1800s and early 1900s in a predominately Victorian style of architecture. The Smethport Mansion District Walking Tour is a self-guided walking tour among these historic homes. A brochure is available at the kiosk in front of the McKean County Courthouse at 500 West Main Street. Five of the mansions, are known as the “Wedding Mansions,” homes gifted by family to the newlyweds when they became husband and wife. Two of the mansions are B&Bs- the Mansion District Inn and the Blackberry Inn. Hamlin Lake offers a relaxing site for viewing the colorful hillsides surrounding Smethport.

The highway bends and twists as it winds its way to Port Allegany. Along the way is Lynn Hall, an architectural gem. It is a sprawling Modernist Movement style structure. Construction began in 1935 and inspired the design for Fallingwater by Frank Lloyd Wright. If you wish to tour this building, call ahead, it is in the midst of renovation, but the owners are happy to offer tours with advance notice. Phone 954-554-8492.



Port Allegany has a rich history of glass manufacturing including glass blocks. Serenity Park, is a sparkling public park of artistic glass blocks showcases the rich local history of this worldwide product once proudly manufactured here. Local attractions and manufacturers are showcased in the artwork etched into the towering glass block towers. Creative artwork include the glass walkways, a glass castle, and sparkling glass and metal trees. Located at the intersection of Rt. 6 and Mill Street, the park is open daily with free admission.

Kane, “A Star in the Forest” is the doorway to the Allegheny National Forest and the Longhouse National Scenic Byway. Rich in local history, this is the town designed by General Thomas Kane, the builder of the Kinzua Bridge, and a very famous American Civil War General.

The McCleery Discovery Center at the Historic Kane Depot digs into the history of the Lobo Wolves. Dr. McCleery, the father of the endangered species movement, started one of the first sites in America dedicated to preserving an endangered species-the Great Plains Buffalo Wolves. Here you will find the largest collection of Buffalo Wolves artifacts in the world. Many artifacts of the cultural history of Kane are displayed; photographs and documents relating to the founding family, Thomas and Elizabeth Kane, local industry, businesses, and the railroad. Station Shop, located in this restored 1871 Kane RR station, offers PA Wilds art & crafts, PA made wooden toys, local maple syrup, Kinzua Bridge hand-rail clocks, jewelry, and many other treasures.



Feeling parched and hungry? Flickerwood Wine Cellars- the Wine that Rocks, Twisted Vine Beverage, and CJ Spirits- a craft distillery, offer tasting and touring. A few dining options include Texas Hot Lunch/4 Sons, a local family business since 1914. Serving the always popular Souvlaki Dinner with Greek salad, Pita Pleasers and Gyros or the famous Texas Hot – with a recipe that dates to 1914 – a plump, juicy hot dog with a squirt of mustard, sprinkled with onions, and smothered with their famous sauce. Newly opened is Table 105, a steak and seafood restaurant offering fresh and delicious options created by Chef Coby Butler.

Plan Your Trip...

For additional information on sites to see and things to do, or to order a Scenic Driving Tour with a map showing seven color-coded road trips phone 800-473-9370 or go to www.visitANF.com.



Autumn's Splendor

Autumn in Pennsylvania is multi-sensory event that must be experienced to be completely understood. It's very easy to see autumn as a dull and dreary





As the days continue to be warm and sunny, the evenings grow colder. This makes way for snuggling near campfires with the ones you love as the evening air is filled with the aroma of burning wood.

You may wear t-shirts, shorts, and sandals during the day, but come night time, wool sweaters, jeans, and sneakers are warranted. There's something special about putting on jeans after having worn shorts all summer long. And there's something comforting about the scratchy wool keeping your body warm, while the evening air chills your hands and face.





Grilling burgers and hot dogs for dinner is traded for homemade chili or chicken soup. In central Pennsylvania, it's not just soup, but chicken corn soup. A tradition from the the Pennsylvania Dutch, it's a meal that should not be missed. It's thick chicken broth with plenty of corn and other vegetables from the last of the summer harvest. With chunks of chicken and some chopped hard-boiled eggs, this sweet and savory dish will warm you from the inside.

And don't forget the apple harvest festivals. There's several throughout the state, but arguably the best is in Biglerville, PA. Every year, for

two weekends in October, you can attend the National Harvest Festival. Here you can enjoy a variety of apple products, including fresh apple cider and warm apple fritters.

Last, but certainly not least, is the turning of the foliage. With her graceful hand, Mother Nature paints the hills with colors so vibrant, they will live on in your memory long after you view them. The smells of the fallen leaves will also trigger memories of the experience for years to come. As you hike along one of many of the Pennsylvania mountain trails, the leaves crunch under your feet as animals prepare for the coming winter.

Photos:

*Pages 34-35:
Somerset County,
by Melanie Fitzpatrick*

*Page 36:
Lake Julia, Mercer County,
by Laura Ackley*

*Frick Park, Allegheny County,
by Amanda Brisco Photography
www.AmandaBriscoPhotography.com*

*Page 37:
Lake Julia, Mercer County,
by Laura Ackley*

*Page 38, from top left:
The Lands at Hillside Farms;
Farmers Market Luzerne County,
by Krista Patla*

*Westmoreland County Fair,
by Melanie Fitzpatrick*

*Indiana County,
by Shirley Mains, courtesy of Gash Mains*



Make time to take a road trip through the rolling hills on a leisurely Sunday drive, while the visual splendor of distant mountains provides a stunning backdrop.

As it stimulates all five of your senses and creates memories that will last a lifetime, autumn in Pennsylvania is certainly a special time.



Timing Pennsylvania's Fall Color Peaks

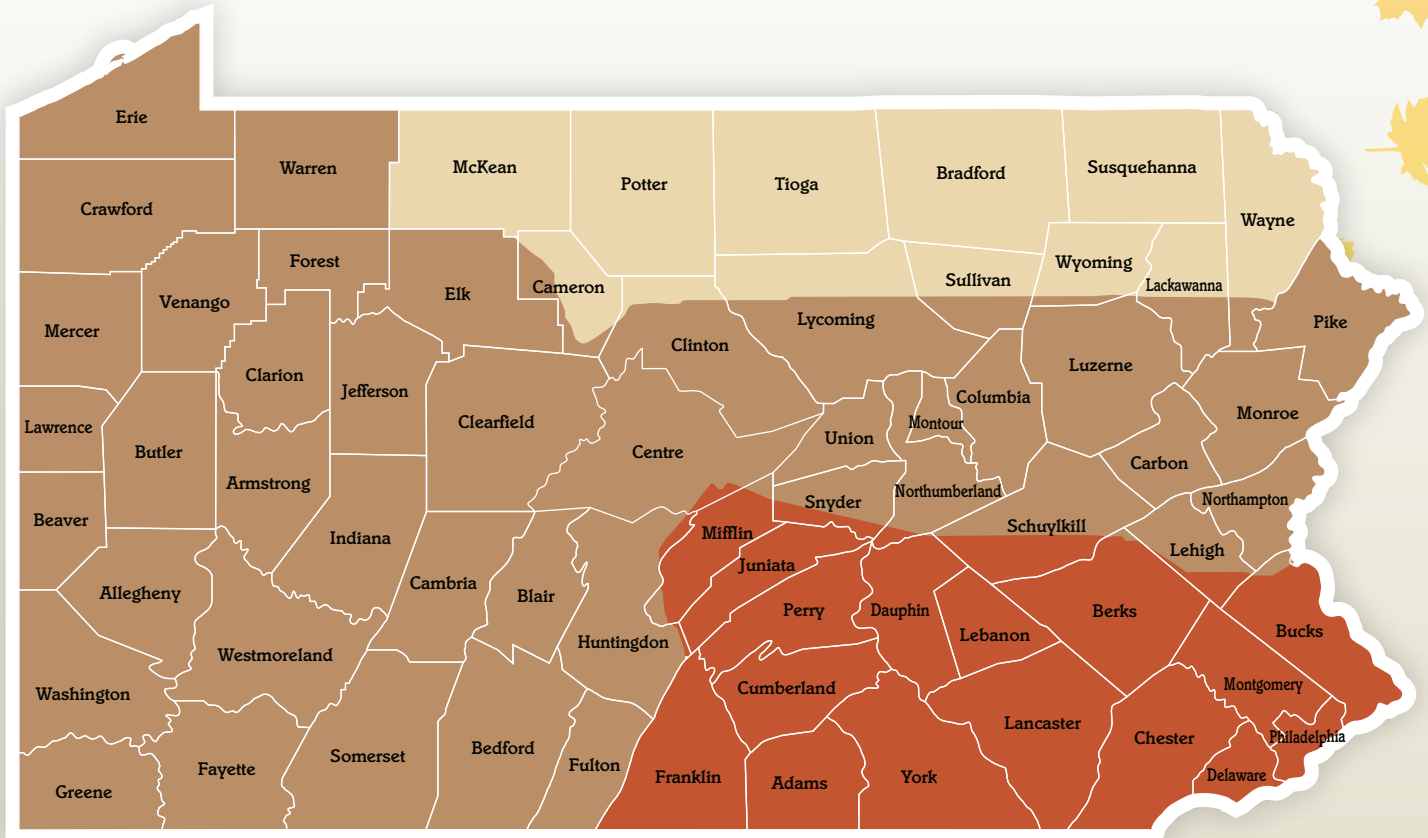
Pennsylvania's unique topography, size, and geographic location provides the state with some of the most breathtaking fall foliage in the world. The climate allows for a wide variety of tree and shrub species, which creates a vibrant palette of colors.

On the eastern Allegheny Plateau, you will find Ohio buckeye, bur oak, and shingle oak. Head north to discover species of gray and paper birch, and the mountain ash and maple. Because of Pennsylvania's size, approximately 46,000 square miles, the viewing season extends throughout the entire month of October, creating the most beautiful and long lasting event in the state.

Zone 1 – Northern Zone: Peaks in Early October

Zone 2 – Central Zone: Peaks in Mid-October

Zone 3 – Southern Zone: Peaks in Late October





Escape from the Ordinary

Stay at one of two luxurious inns and enjoy the experience of a lifetime featuring lavishly appointed guestrooms, casual and gourmet dining at award-winning restaurants, and indulgent spa services.



Tara - A Country Inn
724-962-3535 | Tara-Inn.com

Visit **MercerCountyPA**
YOUR SOURCE FOR TRAVEL PLANNING
Pennsylvania
Picture your happiness

Buhl Mansion Guesthouse & Spa
724-346-3046 | BuhlMansion.com

LODGING ~ DINING ~ SPA ~ EVENTS + GIFT CARDS AVAILABLE FOR ALL OCCASIONS



VISITLAWRENCECOUNTY.COM / 724-654-8408



Happiness is Found in the Simple Pleasures of Life

spotlight on...

In recent years, Pennsylvania's brewery and distillery business has boomed. Across the state, entrepreneurs have taken advantage of their own personal creativity and the customers desire for something unique and local.

From beer to whiskey, there's something for everyone. It might be right across the street from where you are currently sitting, and you don't even know it.

The following listings are just the beginning of what you can find.



Craft Brews and Spirits Across Pennsylvania

breweries

Appalachian Brewing Company

Harrisburg – Dauphin County
717-221-1080
abcbrew.com

Barley Creek Brewing

Tannersville – Monroe County
570-629-9399
barleycreek.com

Fegley's Brew Works

Allentown – Lehigh County
610-433-7777
thebrewworks.com

Brewerie at Union Station

Erie – Erie County
814-454-2200
brewerie.com

Bube's Brewery

Mount Joy – Lancaster County
717-653-2056
bubeshillbrewery.com

Bullfrog Brewery

Williamsport – Lycoming County
570-326-4700
bullfrogbrewery.com

Dock Street Brewery

Philadelphia – Philadelphia County
215-726-2337
dockstreetbeer.com

East End Brewing Company

Pittsburgh – Allegheny County
412-537-2337
eastendbrewing.com

Endless Brewing

Montrose – Susquehanna County
570-967-0985
endlessbrewing.com

Enix Brewing Co.

Homestead – Allegheny County
412-656-2107
enix.beer

Happy Valley Brewing Company

State College – Centre County
814-234-4406
happyvalleybrewingcompany.com

Iron Hart Brewing

Carbondale – Lackawanna County
570-280-2739
ironhartbrewing.com

Jam Room Brewing Company

Newfoundland – WAYNE COUNTY
570-252-6122
jamroombrewing.net

Manayunk Brewery

Philadelphia – Philadelphia County
215-482-8220
manayunkbrewery.com

Mortals Key Brewing Company

Jamestown – Mercer County
724-932-1080
mortalskey.com

Neshaminy Creek Brewing

Croydon – Bucks County
215-458-7081
neshaminycreekbrewing.com

Nimble Hill Brewing Company

Mehoopany – Wyoming County
570-406-9265
nimblehillbrewingcompany.com

North Country Brewing Company

Slippery Rock – Butler County
724-794-BEER
northcountrybrewing.com

North Slope Brewing Company

Dallas – Luzerne County
570-255-4012
northslopebrewing.com

Old Forge Brewing Company

Danville – Montour County
570-275-8151
oldforgebrewingcompany.com

Pocono Brewery Company

Swiftwater – Monroe County
570-839-1500
poconobrewery.com

The Proper Brewing Company

Quakertown – Bucks County
215-869-6075
theproperbrewing.com

Prussian Street Brewing Company

Manheim – Lancaster County
717-664-3333

Race Street Brewery

Clearfield – Clearfield County
814-205-4052
racesstreetbrew.com

Rivertowne Brewing

Export – Westmoreland County
724-519-2145
myrivertowne.com

Ship Bottom Brewery

Wallingford – Delaware County
610-368-5660
shipbottombrewery.com

Shy Bear Brewing

Lewistown – Mifflin County
717-447-1701
shybearbrewing.com

Saint Boniface Craft Brewing Company

Ephrata – Lancaster County
717-466-6900
stbonifacebrewing.com

Selin's Grove Brewing Company

Selinsgrove – Snyder County
570-374-7308
selinsgrovebrewing.com

Sly Fox Brewery

Pottstown – Montgomery County
484-300-4644
slyfoxbeer.com

Spoonwood Brewing Co

Bethel Park – Allegheny County
412-833-0333
spoonwoodbrewing.com

Stable 12 Brewing Company

Phoenixville – Chester County
610-715-2665
stable12.com

Starview Brewing Company

Mount Wolf – York County
717-266-5091
starviewbrew.com

Stickman Brews

Royersford – Montgomery County
856-912-4372
stickmanbrews.com

Tempest Vineyards

Hanover – York County
717-451-9898
warehousegourmet.net

Thirsty Farmer Brew Works

Biglerville – Adams County
717-334-3325
acresoflandwinery.com





Photo Courtesy of Spoonwood Brewing Co.

Nestled alongside Baptist Road in the suburbs of Pittsburgh, there's a one of a kind microbrewery that has perfected it's craft. The no-nonsense industrial atmosphere of **Spoonwood Brewing Co.** invites you to enjoy their no-nonsense craft beverages.

Their Dead Goon imperial stout, boasting a 8.7% alcohol per volume is a sure-fire winner for those who enjoy a rich and hearty beverage. Or for the IPA lovers, the Killer Diller will light up your taste buds with its hoppy goodness.

When you visit, be sure to check out their wood fired pizza, with the fan favorite Wake & Bake, which is topped with bacon, sausage, banana pepper, cracked egg, smoked provolone, house-made mozzarella, basil, and Sicilian oregano.



Photo by Lynda Stewart

TimberCreek Tap & Table

Meadville - Crawford County
814-807-1005
Grove City - Mercer County
724-748-6080
timbercreektapandtable.com

Tired Hands Brewing Company

Ardmore - Montgomery County
610-896-7621
tiredhands.com

Tired Hands Fermentaria

Ardmore - Montgomery County
484-413-2983
tiredhands.com

Turkey Hill Brewing Company

Bloomsburg - Columbia County
899-057-0387
turkeyhillbrewing.com

Union Barrel Works

Reamstown - Lancaster County
717-335-SUDS
unionbarrelworks.com

Weyerbacher Brewing

Easton - Northampton County
610-559-5561
weyerbacher.com

Whitehorse Brewing

Berlin - Somerset County
814-233-3043
whitehorsebrewing.com

Wyndridge Farm

Dallastown - York County
717-244-9900
wyndridge.com

Yellow Bridge Brewing Co.

Delmont - Westmoreland County
724-300-3922
yellowbridgebrewing.com

Yorkholo Brewing Co.

Mansfield - Tioga County
570-662-0241
yorkholobrewing.com

Zeroday Brewing Company

Harrisburg - Dauphin County
717-745-6218
www.zerodaybrewing.com

Banter's Hard Cider

Stroudsburg – Monroe County
570-399-1080
bantersharcider.com

Big Spring Spirits

Bellefonte – Centre County
814-353-4478
bigspringspirits.com

Blackbird Distillery

Brookville – Jefferson County
814-849-0915
blackbirddistillery.com

Boardroom Spirits

Lansdale – Montgomery County
267-642-9961
boardroomsprits.com

Brandywine Branch Distillers

Elverson – Chester County
610-901-3668
brandywinebranchdistillery.com

Chicken Hill Distillery

Kersey – Elk County
814-885-6818
chickenhilldistillery.com

CJ Spirits

Kane – McKean County
814-837-1500
cjsprits.com

Colonel Ricketts Hard Cider

Benton – Columbia County
570-854-1948
colonelricketts.com

The Colony Meadery

Allentown – Lehigh County
855-632-3669
colonymeadery.com



Photo by Harrison Ford Photography

From the moment you walk into the tasting room at **Boardroom Spirits**, you know that you have arrived at a special place. The rustic ambiance comforts you as it draws you in. You feel at home as you pull a stool up to the bar and the atmosphere embraces you.

The staff are extremely polite and knowledgeable about anything, but be sure to ask them about the Boardroom Periodic Table of Spirits. That would be A, B, C, and P, which are spirits distilled from fruits and vegetables. They are 95% alcohol by volume and some of the most unique liquids you will ever imbibe.

A is for apple. An apple brandy that is crisp clean and with a touch of sweetness. B is for beet. Made with real beets it's a distilled spirit with earthy richness. C is for carrot. A carrot distilled spirit whose natural sweetness shows through. P is for pear. There's two of these gems, either Bartlett or D'anjou. Both are excellent and have very different flavors that need to be tasted to be understood.

In addition to the periodic table, Boardroom crafts classic spirits such as gin, rum, and vodka. Everything is carefully and meticulously crafted on site. Swing by and kick back after a long day of fall foliage viewing.



Photo by Harrison Ford Photography

distilleries

County Seat Spirits

Allentown - Lehigh County
610-628-9502
countyseatspirits.com

Disobedient Spirits

Homer City - Indiana County
724-915-8124
disobedientspirits.com

Eight Oaks Craft Distillers

New Tripoli - Lehigh County
484-387-5287
eighthoaksdistillers.com

Five Saints Distilling

Norristown - Montgomery County
610-279-5364
fivesaintsdistilling.com

Hardball Cider

Bethlehem - Northampton County
610-625-3744
hardballcider.com

Hazard's Distillery

Mifflintown - Juniata County
717-527-2328
hazardsdistillery.com

Hewn Spirits

Pipersville - Bucks County
215-766-7711
hewnspirits.com

Hidden Still Spirits

Lebanon - Lebanon County
717-270-1753
hiddenstillspirits.com

Keystone Distillery

Media - Delaware County
610-566-2867

Lang Beverage Co.

Nanticoke - Luzerne County
langbeverage.org

Maggie's Farm Rum Distillery

Pittsburgh - Allegheny County
412-709-6480
maggiesfarmrum.com

Manatawny Still Works

Pottstown - Montgomery County
484-624-8271
manatawnystillworks.com

Midnight Madness Distilling

Quakertown - Bucks County
215-268-6071
mmdistilling.com

Midstate Distillery

Harrisburg - Dauphin County
717-745-5040
midstatedistillery.com

Mingo Creek Craft Distillers

Washington - Washington County
724-503-4014
libertypolespirits.com

Mountain Top Distillery

Williamsport - Lycoming County
570-745-2332
mountaintopdistillery.com

New Liberty Distillery

Philadelphia - Philadelphia County
800-996-0595
newlibertydistillery.com

Old Republic Distillery

York - York County
717-885-5095
drinkord.com

Philadelphia Distilling

Philadelphia - Philadelphia County
215-671-0346
philadelphiadistilling.com

Reading Distilling Guild

Reading - Berks County
484-222-3601
rdgspirits.com

Red Pump Spirits

Washington - Washington County
724-249-2721
redpumpspirits.com

Ridge Runner Distillery

Farmington - Fayette County
724-434-6659
ridgerunnerdistillery.com

Rowhouse Spirits

Philadelphia - Philadelphia County
267-825-7332
rowhousespirits.us

Tall Pines Distillery

Salisbury - Somerset County
814-442-2245
tallpinesdistillery.com

Thistle Finch Distillery

Lancaster - Lancaster County
717-478-8472
thistlefinch.com

Wigle Whiskey

Pittsburgh - Allegheny County
412-224-2827
wiglewhiskey.com

Triple Sun Spirits Co.

Emmaus - Lehigh County
610-904-8082
triplesunspirits.com

Oktoberfest:

Celebrate with Breweries and Distilleries in the Lebanon Valley

By Mary Weigley

Photos Courtesy of Visit Lebanon Valley



Oktoberfest, the annual festival held in Munich, Germany in late September or early October, features the love of beer and traditional German food. In Germany, it is a sixteen to seventeen-day folk festival, held since the 1890s.

This year, the Lebanon 8th Street Music Festival presents Oktoberfest on September 22nd, as a day-long celebration in the style of a traditional German Beer Garden featuring beer, bratwurst (German sausage made from veal, beef or pork), pretzels and perogies (dumplings filled with a savory or sweet filling). Authentic German music will be featured by the Ed Kolle Dutch Band, the Heidelberg Brass Band and Dave Wilson's Happy Wanderers German Band.



Breweries have a long history in Lebanon County with evidence of the first beer brewing in 1759 when Charles Arnt was listed as a brewer in the list of taxables for Lebanon township. He probably owned the first commercial brewery in the county.

Over the years thirty-three breweries operated in Lebanon County; one owned by a woman. Mary Martin "Granny" Forney owned a Cake and Beer Shop in Annville where she sold beer and mead, an alcoholic beverage made by the fermentation of honey, malt, yeast and spices.

One of the more well-known breweries was the Iron City Brewing Company (no relation to Iron City Brewing Company in Pittsburgh). This company brewed Rheingold Beer, the most popular beer brewed in Lebanon County.

Today, Lebanon County has three breweries—Snitz Creek Brewery, Mount Gretna Craft Brewery and the Rotunda Brewing Company.



Snitz Creek Brewery

Snitz Creek Brewery was the first brewery in Lebanon in over fifty years when it opened in 2014. Snitz added a tasting room in Palmyra in 2016. The owners were passionate about craft beer and the love of the outdoors, in particular fly fishing, and wanted to share this with their customers.

An outdoor theme has been followed in the naming of some beers such as Opening Day, Woolly Bugger, Linebreaker and Explorer. Other beers are named after Lebanon County foods such as Seltzer's Smokehouse Ale and Opera Fudge Stout.



Snitz Creek Brewery

The brewery features a "Brewing With a Purpose" menu—a portion of each beer purchased supports a local charity. Snitz Creek celebrates Oktoberfest and the apple harvest with Snitzelfest September 29th, offering a German-themed menu (sausage, sauerkraut and all things apple) and live music.

Mount Gretna Craft Brewery is Lebanon County's newest brewery, opening its doors in 2017, with the goal of bringing back the neighborhood brewery, long a part of Lebanon County's history. Mt. Gretna, located in Campbelltown, has created a gathering place that celebrates local artisans and the outdoors, supporting numerous organizations such as Lebanon Valley Rails to Trails. It is a place where people can share good times and enjoy good locally-sourced food and hand-crafted beer.



Mt. Gretna Craft Brewery

Locally inspired beers dominate the menu including Palmyra Pilsner, the Blue-eyed Six (named for the infamous group of Lebanon Valley outlaws who inspired the Red-Headed League, a Sherlock Holmes story by Sir Arthur Conan Doyle), the 1883 Iron Master Stout (celebrating the iron industry tradition in the Lebanon Valley), Governor Dick Pale Ale and Chiques Creek IPA. Mount Gretna Craft Brewery celebrates Oktoberfest October 6th with festive fall flavors throughout the day and Brewhouse Americana Music.

Rotunda Brewing Company, Annville, started as a 6-pack to go beer shop. A small fifteen-gallon brew system was purchased in 2014 and the owners began brewing very small amounts of beer. By 2016 a new brewer was hired and Rotunda began to produce great beers. Recently Rotunda purchased a seven-barrel brew system and are now brewing their own fresh beers weekly. They also started distributing their beer. Rotunda supports the community, participating in such events as Swatara Food and Brew Weekend in July and promotes the neighborhood brewery tradition with events such as open mic nights. In the fall Rotunda releases sweet potato and hot pepper "squirm."



Mt. Gretna Craft Brewery



Hidden Still Spirits

Distilling liquors was a major American industry, rooted in agricultural enterprises. Most local farmers distilled some type of spirits, turning grains and fruits into alcoholic beverages. Evidence of this activity has been uncovered in archaeological investigations on the Alexander Schaeffer farm in Schaefferstown. Not far from the farm, Michter's (Bomberger's) Distillery was in operating. Michter's is the nation's oldest distillery, built in 1753, and lasting until prohibition made alcohol illegal. During it's operation, the distillery was so famous that when George Washington needed whiskey for his men at Valley Forge, he came to Lebanon to purchase it.

Seven years ago, **Hidden Still Spirits** opened its doors as the first distillery in Lebanon County since Prohibition, producing the owner's favorite whiskey, bourbon. The name "Hidden Stills" comes from how the process of distilling spirits has been conducted many times throughout history.

Hidden Stills is housed in the historic Yocum Brothers Cigar Factory building built in 1916. In the three-story building, exposed wooden beams rise up from refinished original hardwood floors. Four large windows behind the bar allow patrons to look directly into the distillery.

Spirits include Hidden Stills signature Hidden Still Bourbon, Hidden Still Gin (distilled from locally grown corn and malted barley), Hidden Still Barrel Finished Gin and Hidden Still Spice Rum (made with Union Canal Rum). Union Canal Rum is a white rum, named after a local landmark in Lebanon County (Union Canal Tunnel Park preserves the oldest existing transportation tunnel in the United States). Blue-eyed Six Whiskey, named after the previously mention outlaws who inspired a Sherlock Holmes story mentioning Lebanon. Coming soon to the distillery, Hidden Still Brandy.

The long tradition of Oktoberfest is celebrated in many ways in the Lebanon Valley; not only at the breweries but also at the Lebanon Valley's many fine restaurants. Make a day of it and enjoy the flavors and traditions of fall in the Lebanon Valley.



Hidden Still Spirits



Adams County Pour Tour

On Tap in Gettysburg

By Carl Whitehill

Photos Courtesy of Destination Gettysburg

There's nothing quite like a perfectly poured craft beer, the first glass of wine out of a freshly corked bottle, or the bubbles of a sparkling cider hitting your palate just right. Experience them for yourself, on the new Adams County Pour Tour, which highlights the region's growing craft beverage industry.



Beverage makers throughout the rural countryside of Adams County, Pennsylvania, understand the impression that a drink can make, and have a passion behind every pint, every splash, every pour.



Destination Gettysburg invites you to get a taste of the Adams County region through a new adventure to highlight the countryside's unique craft beverage industry.

trees, making it an ideal location for growing not only 100 varieties of apples, but peaches, grapes, hops and more. Tucked among the farm markets, orchards and vineyards is a growing number of wineries, cideries, breweries and distilleries.



The Adams County Pour Tour brings together wineries, breweries, distilleries and cideries for an amazing culinary trail – designed to create one memorable experience through the bold flavors of this destination.

“Each of these craft beverage makers is special, but bringing them together into one trail will create a more memorable experience for travelers and encourage more visitors to explore the Gettysburg countryside,” said Norris Flowers, President of Destination Gettysburg. “The Pour Tour is a great way to highlight a variety of craft beverages – ranging from wines, to ciders, beer and spirits – all found right here in Adams County, PA”



Created as a way to bring together a variety of craft beverage experiences into one adventure, Destination Gettysburg launched the Adams County Pour Tour in May of this year.

Rooted in the heart of Pennsylvania's Fruit Belt, Adams County is home to more than 20,000 acres of apple



Pour Tour participants will receive a passport to start their journey along the trail. Stamps are issued at each location for purchasing a drink or tasting. Prizes are awarded for collecting five, 12 and 20 stamps.

“We love to share the passion that we have for the wine we make and can’t wait to be a part of this new tour which creates a wonderful way to experience the local craft beverage community,” said Melissa Roth of Adams County Winery.

Events, such as the Gettysburg Brew Fest, Gettysburg Wine & Music Festival, PA Cider Fest as well as smaller-scale events held at various locations such as tastings and food pairings, will also be highlighted through the Adams County Pour Tour.

“The Pour Tour is a great opportunity to join other craft beverage makers in showcasing the growing industry in Adams County,” said Kevin Knouse of Thirsty Farmer Brew Works, one of the participants on the trail. “We couldn’t be happier to be a part of the tour.”



Stops along the Adams County Pour Tour include:

Adams County Winery

Orrtanna

Adams County Winery’s Wine Shop at 25C

Gettysburg

Battlefield Brew Works/Spirits of Gettysburg

Gettysburg

Boyer Cellars

Biglerville

Brookmere Wine & Tasting Room

Abbottstown

Buddy Boy Winery & Vineyards – Tasting Room

Gettysburg

Center Square Brewing

Abbottstown

Halbrendt Vineyard & Winery

Orrtanna

Hauser Estate Winery

Biglerville

Knob Hall Winery – Tasting Room

Gettysburg

Mason Dixon Distillery

Gettysburg

Reid’s Winery: The Cider House

Gettysburg

Reid’s Winery: The Home Winery

Orrtanna

Thirsty Farmer Brew Works

Biglerville

For more information on the Adams County Pour Tour, visit www.AdamsCountyPourTour.com

Destination Gettysburg, the official destination marketing organization, markets Gettysburg – Adams County as a premier travel destination, producing a positive economic impact.



is in

Pennsylvania?

In the western half of Adams County lies over 20,000 acres with soil so fertile that many compare it to the soil found in Italy. The Historic South Mountain Fruit Belt - America's Orchard - boasts rich soils, well drained and perfect for producing some of the best fruit that you can find in the United States.

Much like the tobacco growing industry in Pennsylvania, the production of apples and peaches are largely overlooked and unknown. Adams County is the 6th largest producer of apples and peaches in the nation. Nearly three-quarters of restaurants in America serve Adams County produce.

Take a weekend trip in October to the National Apple Harvest Festival. You and your family can travel across the rolling hills, tour the orchards, and visit farm stands.



Adams County, PA. Photo by Jon Bilous.

Thank You

We at Pinpoint: Pennsylvania would like to take a moment to sit back and appreciate everyone that has continue to support this endeavor. It has been a whirlwind of a project, growing quickly from an idea, to an actual creation, to a multi-issue publication.

We continue to look for people to join us on our voyage and are actively looking for drop site / distribution points, advertisers, and content contributors. We know there are great experiences out there waiting to be shared, and we hope that you'll help us spread the word about all that Pennsylvania has to offer.

Email us today at info@pinpointpennsylvania.com to make arrangements to contribute, distribute, and advertise.

Visit the ALL-NEW PinpointPennsylvania.com for more content, to order a subscription, share your events, and to become part of the Pinpoint: Pennsylvania community.



SEPTEMBER 18 – 30



In this comedy written by Lewis Black, it's the morning of Courtney's wedding day. Her mother is making sure that everything is perfect.

The groom is perfect. The dress is perfect.

The decorations will be perfect.

Then the doorbell rings. Guess who?

It's Courtney's old boyfriend ... much for perfect!

"If sustained laughter is the best measure of a comedy, One Slight Hitch makes the grade."

- New York Magazine

OCTOBER 2 – 14



It's 1938 and a Saturday Night Gospel Sing at a little country church in the Smoky Mountains. The Sanders Family will perform more than 2 dozen bluegrass songs including *No Tears in Heaven*, *Wonderful Time Up There* and *I'll Fly Away*.

Receive \$5 off the purchase of a ticket to either fall show.

Call the Box Office or order online using code: **FALLFIVE**

This offer is valid for new purchases only.

No other discounts apply. Valid August 25-October 14.



**MOUNTAIN
PLAYHOUSE** 
A PROFESSIONAL EQUITY THEATER SINCE 1939
a 501(c)3 non-profit organization



The Mountain Playhouse has been producing live, professional theater with Equity actors in the beautiful Laurel Highlands since 1939. The charming, rustic theater is converted from a grist mill and is nestled in a peaceful, lakeside setting amidst landscaped gardens and strolling paths. Before the show and during intermission, audiences enjoy the baked goods and beverages at the snack veranda with a view of the water, the resident ducks and stunning autumn colors towards the end of the theater season. Matinee and evening performances are offered June through October. The theater is climate-controlled and handicap accessible. Groups of 10 or more enjoy generous discounts and personal service from the group sales manager. Located in Jennerstown just off Route 30 - the historic Lincoln Highway.

www.mountainplayhouse.org 814.629.9220 x100

A hand holding a glass of beer in front of a city skyline. The glass has "ENIX BREWING CO." printed on it. The background shows a river, a bridge, and several skyscrapers under a blue sky. A large, faint circular logo with a triangle inside is visible in the upper left.

The Craft Beer Revolution That Started in Spain

Has Come
to the
Steel City

ENIX BREWING CO.

*GUSTATORY ENTERTAINMENT
BEER • FOOD • BOWLING • EVENTS*

337 E 8TH AVE, HOMESTEAD, PA
(412) 656-2107 • WWW.ENIX.BEER