



Pinpoint: Pennsylvania

Off the Beaten Path

Winter Escapes

- Honoring an Opera Star
- Breweries New & Old
- Groundhog Day, PA-Style



Design ▀ Print ▀ Bind ▀ Mail

Our services Include:

**Design • Printing • Bindery
Mailing Services • Shipping**

For quotes please contact our
Customer Service Team at
customersupport@gazetteprinters.com

www.gazetteprinters.com

T 724-349-3434 • F 724-349-0841
775 Indian Springs Road • Indiana, PA 15701

Gettysburg Getaway

*Photo Courtesy of Liberty Mountain Resort,
Adams County.*

■ 28 More Than Just a
Historical Journey

■ 32 Liberty Mountain Resort:
A Winter Escape in Itself

■ 34 Craft Drinks & Delicious Eats

■ 36 Shopping & Strolling the Streets



Colesburg, Potter County. Photo by Curt Weinhold.

Welcome	1
Winter Contributors	2
Become a Contributor	3
Winter in Pennsylvania	5
Travel Tips	
Hotel Check-in/Check-out Times	7
Winter Lodging Specials in the Pennsylvania Great Outdoors	8
Arts & Entertainment	
2019 Clarion River Jam Bluegrass Festival	11
A Truly Immersive Experience	12
History	
New Hardware at the Old Levine Brothers Store: Enix Brewing Co.	21
This Southwestern PA Girl Recommends a Trip to Pottsville	25
Family	
Indoor Adventures in the Cumberland Valley	38
Food & Drink	
Winter Treats in the Lebanon Valley	40
Outdoors	
Experience a Winter Wonderland	44
Unique Places	
Bucket List Experience: Groundhog Day in Punxsutawney	48
Special Reflection:	
The Making of a Pennsylvania Holiday Icon	55
Find a Distribution Point Near You!	58

Pinpoint: Pennsylvania is a publication of Pinpoint Publishing, LLC.

Editors-In-Chief: Lynda Stewart & Jason Krynski

Editor: Jason Krynski

Creative Director: Lynda Stewart

Sales Consultants: MC McKee, Joanne Cain, & Kim Guthrie

Printing: Gazette Printers

Digital: Higher Images

Marketing: Brand Accelerator



Pinpoint:
Pennsylvania
Off the Beaten Path

Vision

The vision of Pinpoint: Pennsylvania is to provide an entertaining and educational publication, while forming a community focused on sharing unique Pennsylvania experiences. We seek to help gain increased exposure for the lesser known and contribute to their success, and provide unique perspectives on the more familiar.

As Pennsylvania natives, we are proud to not only play a part in stimulating the state economy by encouraging travel, but we are also enthusiastic about educating residents and visitors alike of the unique experiences that lie within the state.

Mission

The mission of Pinpoint: Pennsylvania is to provide a platform for Pennsylvania hospitality and tourism businesses, as well as aspiring content contributors, to have a public forum in which they can share experiences, information, ideas, and opinions.

By utilizing user-generated content, we will be giving exposure to businesses and contributors who may have otherwise gone unrecognized. Providing residents and visitors alike with this kind of insider information will help readers plan unique activities and trips throughout Pennsylvania.

welcome

Welcome to the Winter edition of Pinpoint: Pennsylvania. As all the leaves have fallen, temperatures have dropped, and snow is always right around the corner, we hope that you can cuddle by a fire with someone you love and flip through our latest creation.

The staff at Pinpoint continues to buzz with excitement as the holiday season approaches and many gifts are just around the corner. Our reach continues to grow, and the ideas continue to develop as we find new and thrilling content for all our readers.

In this issue, you will find our contributors have travelled throughout the state in order to experience even more than they have in the past. From a tour of America's Oldest Brewery to a weekend trip in the Gettysburg area, they are out in the state so that you can follow in their footsteps off the beaten path.

If you are pioneering your own trail, please share your great experiences - we are always on the lookout for new story ideas! We also encourage all the business owners and operators of the unique locations throughout the state to reach out to us. We would love to send someone your way to experience your location and share your story. Those interested can contact us at info@pinpointpennsylvania.com

Special thanks to everyone who has been a part of this journey as we got things started this year. We are very excited about what we have planned for 2019 and can't wait to share more of what our amazing state has to offer.

With all that being said, Lynda and Jason, along with all of the staff at Pinpoint: Pennsylvania, we sincerely hope you enjoy this Winter edition.

Go out and make some memories!



Contributors

Linda Devlin moved to the Allegheny National Forest, Bradford, Pennsylvania over 30 years ago, and fell in love with the beauty of the forest. Devlin works as the Exec. Director of the Allegheny National Forest Visitor Bureau, where she can share her passion for the forest daily with visitors from around the world.

Melanie Fitzpatrick has been expressing her creativity in front of and through the camera lens since her college days at Point Park University, where she earned multiple BA's in the Performing Arts. She is an avid outdoor explorer and adventurer. A native Vermonter who lovingly calls Pittsburgh her home, she spends her weekends at her family cabin in the Laurel Highlands hiking, skiing, biking and enjoying nature's beauty in W.PA with her husband and friends. She's a published writer and photographer and currently Coaches Women in Life & Business. Visit her at LivenYourTruth.life

Kim Guthrie leveraged her passion, skills, and experience gleaned from both her 16-year teaching career in Multi-Media & English and her 2-year stint as the Graphic Design & Marketing Coordinator for a healthcare agency into owning her own graphic and web design business, Joyous Graphics Lab. Kim excels at bringing each client's vision to life, while infusing her own recognizable style in each design project she tackles.

Aaron Jumper manages social media and travel PR for the Cumberland Area Economic Development Corporation. When he's not exploring the Cumberland Valley, he loves to attend Yankees games, concerts, and spend quality time with his wife Jen and daughter Ella.

Gina C. Lynn, a resident of Belle Vernon, PA has been the Executive Director of the Greater Rostraver Chamber of Commerce for the past 11 years. In her spare time she loves being outdoors and spends considerable time in the Laurel Highlands region of Western PA, either snow skiing the mountains, or paddle boarding on the rivers and lakes. This is Gina's first contribution to Pinpoint but has had other articles published in local newspapers and digital media.

Danielle Taylor is the marketing and member service coordinator at the Pennsylvania Great Outdoors Visitors Bureau, which promotes tourism in Jefferson, Elk, Clarion, Forest, and Cameron Counties in northwestern Pennsylvania. To learn more or to request free information about the region, go to VisitPAGO.com or call (814) 849-5197.

Mary Weigley is the Administrative Assistant at Visit Lebanon Valley. She holds a Bachelor of Arts degree in American History and focuses her freelance writing on her love of history.



Do you like to write?

Do you take amazing photos?

Do you love Pennsylvania?

Share Your Passions and Become a Pinpoint Content Contributor

Pinpoint: Pennsylvania is a User-Generated Content based publication. All of our content comes from people who love our state, including everyone from the amateur photographer out for a Sunday drive to the experts in the county tourism offices. We rely on our contributors to help us discover the best Pennsylvania has to offer.

Spring into Action!

We are looking for content for our Spring 2019 issue, due out in early March!

Share your favorite wedding venue and photos

Share the best spring garden locations statewide

Share springtime events in your area

Upload your articles and photos today at
PinpointPennsylvania.com/share-your-story

Play! All 4 Seasons



14 State Parks
1431 campsites



48 Trails
covering 250 miles



4 Ski Resorts
118 Downhill Slopes



1000 Plus
Reasons to

41 Trails
for Mountain Biking



**Live
Work**

323 Miles
on 17 Rails to Trails

99 Miles
Nordic Trails

Play!

15 Class 3
Waterways

in the Alleghenies



Trout Fishing
1800 miles of natural
reproduction waters



**73 Miles of
Whitewater**

WhereAdventureLives.org

Live *Great Experiences*



Easy Commute
23 Minutes • Average*

Work *Smart*

67 Festivals
One Every Weekend!



28 Music Venues
Jazz • Country • Rock

**11 Universities
& Colleges**



6,349 Higher Ed
Grads Annually



45,570
College Educated
Employees

62 Local Harvest
CSA Farms



**21 Museums
& Cultural
Centers**



**4,901
Enterprises**
with payroll*



**14 Local
Breweries!**
30 Craft
Beer Hotspots

*Cambria & Somerset
Counties Only

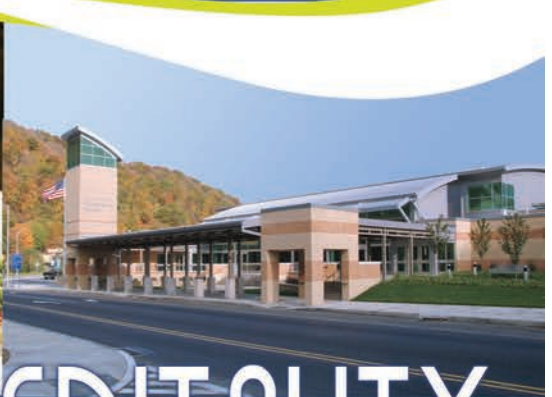
Just a few reasons why...

ADVENTURE LIVES IN CAMBRIA COUNTY

Winter In Pennsylvania

You don't have to travel very far to experience the magnificence of winter in Pennsylvania. All you need to do is look out the window on a snowy winter day to become mesmerized by its splendor. There's something special about a cold snowy morning before anyone has awoken. The crisp morning air brings a gentle stillness with ear deafening silence. Or if you prefer, take a night time drive on a blue moonlit highway in the country. Whatever you choose, take a deep breath of that cold winter air and let it invigorate your soul.

Rt. 44 - Highway to the Stars, Patterson Park, Potter County. Photo by Curt Weinhold.



HOMETOWN HOSPITALITY HEADQUARTERS



250 Market Street • Johnstown, PA 15901
814.535.7777
www.holidayinn.com

*A first class destination in historic
Downtown Johnstown.*



250 Market Street • Johnstown, PA 15901
814.361.2620
www.harriganscafewinedeck.com

*The region's best for food, wine and atmosphere.
Recipient of Wine Spectator's Award of Excellence.*



Frank I Pasquerilla Conference Center

301 Napoleon Street • Johnstown, PA 15901
Phone 814.535.9385 • Toll-free: 1.866.277.5573
www.fjpcconferencecenter.com

The area's finest conference facility.



1440 Scalp Avenue • Johnstown, PA 15904
814.266.8789
www.hiexpress.com

*Brand new hotel conveniently located
in the shopping, dining, and entertainment district.*



CROWN AMERICAN ASSOCIATES

www.crownamericanassociates.com



Hotel Check-in/ Check-out Times

By Jason Krynski

Have you ever wondered why hotels have check-in and check-out times? It's not something that many people consider, but they are established for two very good reasons.

At most hotels, check-out times are usually at 11am or 12 noon and check-in times are at 3 or 4pm.

The industry standard is to have each housekeeper clean 16 rooms per 8-hour shift or one room cleaned per half hour of work. Any guest that checks out before the check-out time helps the housekeeper move forward with her work by allowing that room to be entered to be cleaned. Conversely, when someone checks out after the check-out time, it slows the process down.

Most housekeepers are very good at figuring out who is out of their rooms. Often, they can

help themselves out by getting into rooms that they know have departed. But on occasion, the housekeeper is left with nothing to work on because guests are still in their rooms.

Check-in time is crunch time for the housekeepers and for the front desk teams. Guests have started to arrive with high expectations. They may be looking for rooms of a specific type. Those rooms may not be cleaned yet because a guest didn't check out on time. That tends to be something very hard to explain to

someone who has travelled a great distance to stay with you.

It's a delicate balance of time that occurs in hotels, all over the world, every single day. The above example is a very brief example, without any variables that may affect efficiency. Hopefully, this can shed some light on the process. In the next issue, I will further examine how early arrivals and late check-outs affect this process, why hotels charge for these benefits, and how to get them complimentary with greater ease.

If you are traveling soon and have questions, please feel free to reach out to Practical Insider Travelers Tips at info@pinpointpennsylvania.com. Until next time, be safe and happy traveling!



WINTER LODGING SPECIALS IN THE PENNSYLVANIA GREAT OUTDOORS

Winter is an excellent time to visit the Pennsylvania Great Outdoors region. Not only can you find beautiful snow-frosted trees and landscapes, cozy hearths where you can snuggle up with someone special in front of the fire, and soul-warming food and drinks, but the season also offers great deals on cozy accommodations for you and your loved ones.

The fall and winter unveil a whole different side of the Pennsylvania Great Outdoors region than you'll find in spring and summer, so even if you've been to visit during the warmer months, you'll find a whole new set of endless adventures now. Make first tracks in the snow on cross-country skis or a snowmobile ride, and enjoy the sight of river otters, elk, bear, and other wildlife against a white landscape. Experience the fun of events like the Gingerbread Tour, Festival of Trees, Victorian Christmas, Winterfest, Snowman in the Forest, and of course the world-famous Groundhog Day.



Elk County, Photo by Tom Dorsey.



Photo Courtesy of Cook Riverside Cabins, Clarion County.



Gateway Lodge, Clarion County. Photo by Ernest Fesco, Gateway Lodge.

travel tip

From October through March, VisitPAGO.com Winter Lodging Specials will list a variety of lodging discounts at destinations ranging from snug cabins to luxury lodges to familiar hotels to charming B&Bs, so you're sure to find the perfect place for your winter getaway.

Take advantage of these lodging specials for your own getaway from the stress of the season, or give one as a gift! Enjoy the scenery and peaceful solitude that's unique to the Pennsylvania Great Outdoors. For more information, go to VisitPAGO.com/WinterLodgingSpecials or call (814) 849-5197.



Towers Victorian Inn, Elk County. Photo by Jim Hoover.

Endless Adventure

Autumn is a particularly beautiful and exciting season to visit the Pennsylvania Great Outdoors region. Witness dramatic battles between bull elk during the rut, surround yourself in eye-popping fall foliage, explore the forests on ATV, snowmobile, or cross-country skis, and enjoy family-friendly festivals with something for everyone.

Any time of year, you can visit a world-famous groundhog, hike beneath some of the tallest trees in the north-eastern United States, find intriguing history throughout many charming small towns, and sample the area's unforgettable flavors at a wide range of wineries, breweries, distilleries, and restaurants. Come to the Pennsylvania Great Outdoors and find your endless adventure.




PENNSYLVANIA
GREAT OUTDOORS
VISITORS BUREAU

VISITPAGO.com
(814) 849-5197

2019 Clarion River Jam Bluegrass Festival



Photo by Danielle Taylor

On March 15 and 16, make your way to the Park Inn in Clarion for the 10th annual Clarion River Jam Bluegrass Festival, a much-anticipated celebration of Appalachian music that gathers hundreds of talented players from around the region. Last year, this event drew 28 groups, including popular western Pennsylvania bands such as Well Strung and Echo Valley as well as ensembles from Ohio, New York, Virginia, West Virginia, and Maryland. Over the two days, several hundred audience members enjoyed performances of bluegrass, newgrass, gospel, and roots music of all types by state champion instrumentalists and performers known at the national level. It's free to attend, family friendly, and open to the public.

The event centers on the performance stage in the hotel's main conference room, which features a new

group every half hour for two days full of music, but impromptu jam sessions also break out in additional meeting rooms and hallways as well as in the hotel's central atrium. Attendees can also find vendors, raffles, and workshops throughout the weekend.



The United Way of Clarion County hosts the event, and all proceeds benefit this community organization. Learn more by visiting UWClarionCO.org and book your room at the Park Inn by Radisson at ParkInn.com/Clarion.

A Truly Immersive Experience

By Linda Devlin

Photos Courtesy of ANF Visitors Bureau

Nestled at the edge of the Allegheny National Forest, in the City of Bradford, is a new museum honoring Marilyn Horne, a small-town girl who became an internationally acclaimed opera star.

Born to Bentz Horne and Berniece Hokanson Horne, both natives of Bradford, this legendary star once performed in concerts staged in Bradford's town square. From this humble beginning she became a main stay of the Metropolitan Opera and appeared in virtually every major opera company in the world.

The Marilyn Horne Museum and Exhibit Center, a 3,400 square foot, Art Deco exhibition space is located directly alongside Bradford's town square where she once performed as a child. It is the only museum in the world, of this size and quality, dedicated to a single opera star. Displays include audio guides, film, and 19 interactive exhibits, plus opera costumes and recital gowns.

Marilyn Horne has been called "probably the greatest singer in the world," Opera News 1981. She specialized in roles requiring beauty of tone, and the ability to execute difficult coloratura passages.

A mainstay of the Metropolitan Opera, Marilyn made her debut on stage at the Metropolitan Opera on March 3, 1970. At the age of 20, she appeared in the role of Hata in

Smetana's *The Bartered Bride* for the Los Angeles Guild Opera. In 1954, she sang the voice of *Carmen Jones* in Oscar Hammerstein's re-creation of Georges Bizet's *Carmen*. She sang professionally in the world's great opera houses for over 40 years. Horne is one of the greatest mezzo-sopranos in opera history and is considered the best Rossini interpreter ever.

Horne also sang both contemporary music and traditional popular songs. She sang *Love, Look Away* for the soundtrack of the 1961 film *Flower Drum Song*, and she sang the role of Lady Thiang on the Philips recording of *The King and I* starring Julie Andrews and Ben Kingsley. Horne appeared on the *Tonight Show with Johnny Carson* and she sang *Sing After Me* and *C is for Cookie* on *Sesame Street*.

Marilyn was a recipient of the National Medal of Arts in 1992 and Kennedy Center Honors in 1995. During her career she won four Grammy Awards. Horne's contributions to the opera world are many, including The Marilyn Horne Foundation, created in support of young singers.

AN INTRODUCTION

"...probably the greatest singer in the world."

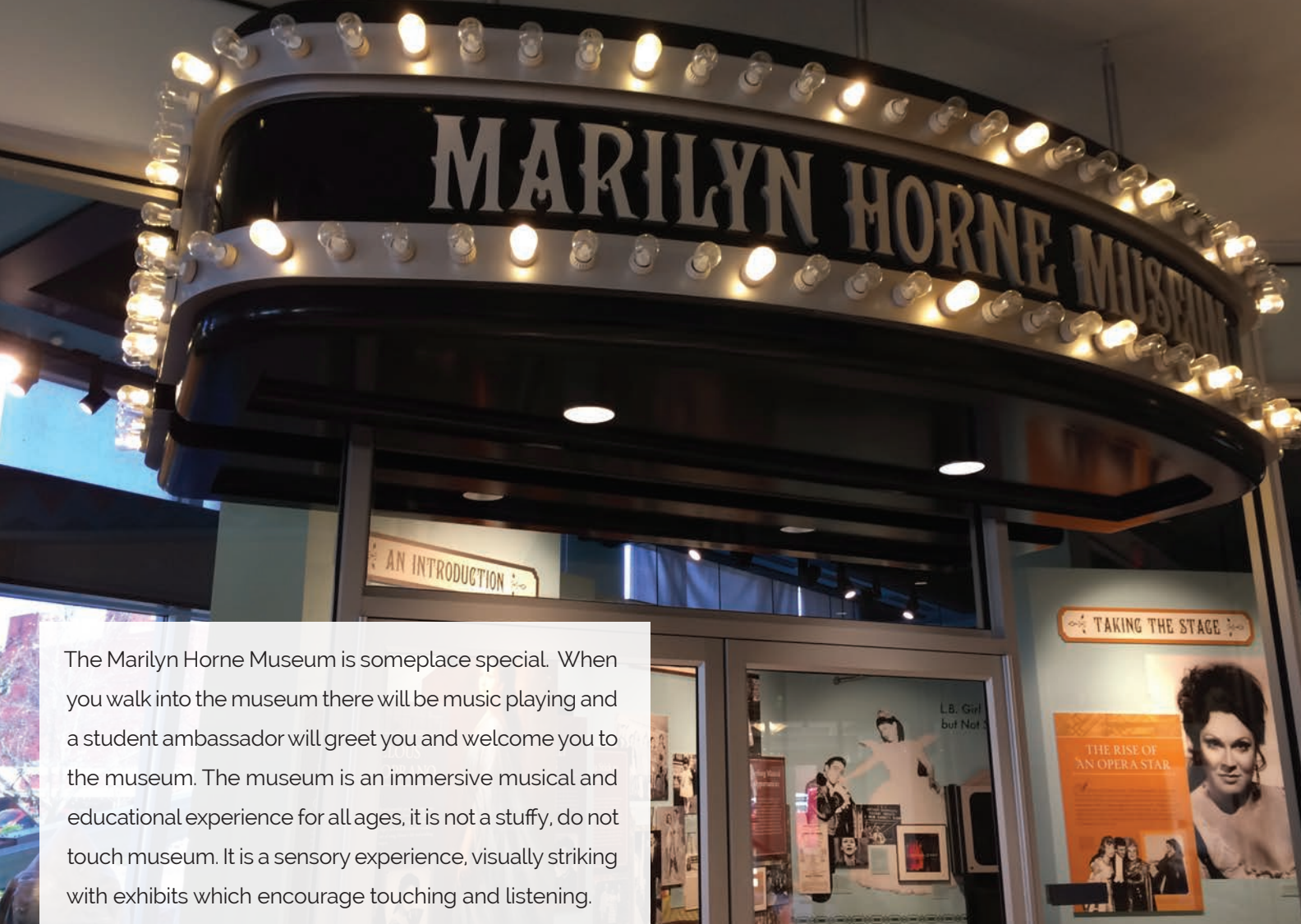
-Opera News

The best advice
how to sing. I
before they st

MARVELOUS MEZZO-SOPRANO

*K*NOWN FOR HER beautiful, rich and powerful, yet agile operatic voice, Marilyn Horne has sung a vast repertoire of music ranging from classical opera to 20th-century American melodies. Having dazzled audiences in opera houses and concert halls around the world, she leaves a legacy as a world-renowned vocalist and performer. Dedicated to preserving the art of song, Horne's life and teaching continue to inspire the next generations of singers.





The Marilyn Horne Museum is someplace special. When you walk into the museum there will be music playing and a student ambassador will greet you and welcome you to the museum. The museum is an immersive musical and educational experience for all ages, it is not a stuffy, do not touch museum. It is a sensory experience, visually striking with exhibits which encourage touching and listening.

The floors are black and white marble, the entrance to the museum is a striking theater marquee. Exhibitions of replica costumes from a few of Marilyn Horne's signature performances are displayed along the hallway to the theater. Each of the intricate costumes has a rich history.

The baroque style theater is a replica of one of her favorite opera houses. Once seated, visitors are treated to a film in which Marilyn Horne herself narrates the story of her rise to international acclaim. Leaving the theater, wander at your own pace exploring, listening, and interacting with the many displays.

For example, the "Design Your Own Opera Exhibit" allows you to pick your characters and design your backdrop. The opera is then performed with music, after which you can capture the image of the opera and e-mail it to friends and family.



Speaking with Matthew Hileman, Director/Curator of the museum, you catch his excitement and enthusiasm for the museum's mission. "I'm fortunate to have worked for international entertainment companies, including most recently the Walt Disney Company. It's my goal to bring a little world-class hospitality magic to our region."

"I think of this museum as a musical jewel box, a musical centerpiece," explains Hileman as he describes the work already accomplished and plans for the museum. Along with his experience at Walt Disney Company, Hileman is the former Director of Marketing for the Bellagio Gallery of Fine Arts, Las Vegas, and has a history of working with museums and collections from around the world. His ideas include creating memorable events, behind the scene tours for groups, and a concert series. He is well on his way to making his magical ideas materialize.



The mission of the museum is to further interest in the art of opera and to inspire and educate new generations on the importance of art, culture and philanthropy through the life and achievements of renowned mezzo-soprano, Marilyn Horne. The University of Pittsburgh at Bradford operates the museum. Housed in the six-story Art Deco building owned by the University, the museum is host to a series of candlelight concerts, special events, exhibition spaces, a café, and an amazingly diverse museum gift shop.

This gift shop is receiving a lot of attention with much thought being given to the items featured. During my visit, I spied a lovely line of French toys, quilled cards made in Vietnam-part of the Fair-Trade Company, greeting cards printed on an old-fashioned letter press, beautiful Christmas tree ornaments, crib mobiles, and a variety of educational toys. Purchasing one of the gorgeous sparkling ornaments, my idea is to hang it on the tree this year, and after Christmas I'm going to have it made into a pin to wear on my winter jacket.

Personally, I like to shop museum stores, I find unique gift items for family and friends, plus I feel like I'm helping a worthy cause. Plans are for the museum gift shop to offer on-line ordering in the future.



The Bradford Centennial

PUBLISHED BY
TIMES & HERALD

BRADFORD, PENNSYLVANIA 1879-1979



FRIDAY, JUNE 15, 1979

HOMETOWN GIRL RETURNS IN TRIUMPH AS OPERA STAR TO PERFORM IN CONCERT

MARILYN 'JACKIE' HORNE SET TO SING ON MONDAY NIGHT

8 P.M. SHOW HAS LONG BEEN COMPLETE SELLOUT

Already legendary performances as an internationally acclaimed mezzo-soprano is a world removed from concerts she staged years ago at Bradford's Public Square.

On Sunday, however, Marilyn Horne will return to her hometown, where it all began. Where she was born, on Avenue B in the city's Fifth Ward.

The Metropolitan Opera star and pianist Martin Katz, Ms. Horne's accompanist for the past 18 years, will appear 8 p.m. Monday at the Bradford Area Senior High auditorium.

The famous singer is scheduled to perform arias and a number of arrangements of German, Italian, English and French origin. And, it's indicated encores will be numerous.

The program will launch the city's Centennial Celebration, events of which will run through mid-August.

Marilyn Horne was awarded the prized Palcoscenico d'oro in a ceremony in Mantua, Italy on May 17. She is the only American ever honored with this award.

Miss Horne has been a mainstay of the Metropolitan Opera since her debut on March 3, 1970 and has appeared with virtually every major opera company in the world.

The famous singer is the daughter of the late Bentz Horne and Berneice Hokanson Horne, both natives of Bradford.

Bentz Horne was a former Bradford city treasurer and well known for his Caruso-type tenor voice. He sang in a number of Bradford churches and at other public events prior to the family's move to California in 1946.

Through proclamation of Mayor Maxwell Moore, Tuesday will be declared Marilyn Horne Day. The singer will be honored at a noon luncheon and afternoon reception at the Bradford Holiday Inn.

Also scheduled to visit Bradford will be 9-year-old Angela, daughter of the celebrated singer and husband, Henry Lewis, internationally recognized conductor.

Appearance of Ms. Horne will bring back many happy memories for Bradfordians, who remember her as little "Jackie" who with her sister Gloria sang due to the Bradford Citizen Band.

The soprano star's nickname was given by her brother Richard, who expected brother rather than a sister when she was

CHRISTIAN CONCERT SCHEDULED

Beautiful music can be heard these days in the Bolivar Drive Baptist Church. It's here that Christian singers from 12 area churches have been gathering to rehearse religious cantata to be presented during the Centennial.

The musical, "Alleluia - A Praise-gathering for Believers," was written by Bill Gaither, one of the world's best-known writers and singers of gospel music. First public performance is scheduled for 7:30 p.m., July 21 at Pitt-Bradford's Swarts auditorium, and is open, free to the public.

There also will be later performances by the choir at area churches.

The singers, a group of over 50 men and women, began singing last August with only seven persons. The idea for forming the group, now known as the Abundant Life Singers, came from director Cathy Swanson. Cathy is the wife of the Rev. Phil Swanson, a secretary at Case Cutlery, and mother of three teenagers.

She says she has wanted to bring the area's Christian singers together for a number of years to attempt a musical. Perhaps her confidence in undertaking such a large task came from her former



Lucille Ball,
comedian & actress,
Jamestown, NY

Ray Evans,
famous songwriter
Salamanca, NY

Marilyn Horne
opera star,
Bradford, PA

Renee Fleming
opera singer,
Indiana, PA

Fun Fact!

If you draw a circle in this part of rural America, within a four-hour radius you will find the hometowns of prominent entertainers. It is an extraordinary example of a cradle of creativity with rural roots.



The Candlelight Concert Series is a fascinating feature of the museum. Hileman is bringing his passion to the museum's mission by featuring young artists in a free concert series. Between six and seven concerts are held yearly. Focusing on young artists, Hileman works with a variety of institutions including the Eastman School of Music at the University of Rochester, one of the finest music schools in the world.

The first of the free concert series were held inside the theater of the museum. Due to the popularity of the concerts, they are now held in another building, the Harriet Wick Chapel, which seats 150, on the campus of the University of Pittsburgh at Bradford, located at 300 Campus Drive, Bradford, Pennsylvania.

The chapel is a perfect location for the concert series. Fashioned of wood and glass the view through the wall of glass is of lush forest. The woodland view is flanked by a pipe organ built by the Schantz Organ Company. The museum and the chapel are both designs of

architect Albert Filoni of MacLachlin, Cornelius & Filoni Architects. This creative group of architects designed many award-winning projects located within the heart of Pittsburgh's Cultural District: Heinz Hall for the Performing Arts and the renovation of the Benedum Center for the Performing Arts.

Filoni loved classical music and opera. As head architect, on both the Marilyn Horne Museum and the Harriet Wick Chapel, every detail speaks to his passion for architecture and music. The acoustics in both buildings are outstanding.

Upcoming performances in the Candlelight Concert Series are February 16, 2019, when the Ginastera String Quartet will perform, and a performance of the Great American Songbook is planned for March 2, 2019. The doors open at 7:00 p.m. with the performance beginning at 7:30 p.m. Reservations are not required. To keep current on the series, sign up for the museums' newsletter at: www.marilynhorne.org/concertseries.



Plan Your Trip...



Open daily, the Marilyn Horne Museum is located at 2 Marilyn Horne Way, Bradford, Pennsylvania. Admission is free. Museum hours are Monday to Saturday 9 a.m. to 5 p.m., and Sunday 11 a.m. to 4 p.m. Café hours are Monday to Saturday, 7:30 a.m. to 5 p.m., Sunday 11 a.m. to 4 p.m. Seasonal and holiday hours may vary.

To schedule group tours, a high tea, or a catered candlelight dinner in the Baroque Theater, phone 814-362-7990. For additional information info@marilynhorne.org, or click on MarilynHorne.org.

INDIANA COUNTY, PENNSYLVANIA

Proud Hometown of Jimmy Stewart

The *Jimmy Stewart* Museum

 Gift Shop • Theater • Rentals 
724-349-6112 • www.jimmy.org

835 Philadelphia St., Indiana, PA 15701



While in Indiana County, Explore:

Smicksburg Amish Specialty Shoppes

64 Miles of Rails-to-Trails

Artisans/Galleries/Boutiques

Wineries/Distillery/Breweries

Outdoor Recreation

Year Round Fairs/Festivals

Including:

**The "It's A Wonderful Life"
Festival & Parade**

Discover Additional Tourist Destinations:



Indiana County
TOURIST BUREAU

724-463-7505   

www.VisitIndianaCountyPA.org

The Christmas Tree Capital of the World

INDIANA COUNTY CHAMBER OF COMMERCE WELCOMES YOU!



Find the people, places, products,
and services you need at the
Indiana County Chamber of
Commerce website:

www.INDIANACOUNTYCHAMBER.COM

(724) 465-2511

www.Facebook.com/IndianaCountyChamber | www.Twitter.com/IndianaCoCOC

Advertise

IN PINPOINT: PENNSYLVANIA!



Get your message in front of Pennsylvanians with a passion for uncovering state culture through travel and exploration.

This spring, Pinpoint: Pennsylvania will feature the Laurel Highlands and The Alleghenies. We'll explore great places to visit, things to do, restaurants, breweries, wineries and more! It's also our wedding issue and we'll explore beautiful places to hold weddings throughout the state.

To advertise, contact: MC McKee at mc@mcmags.com or call 412-721-8491.





New Hardware at the Old Levine Brothers Store: Enix Brewing Co.

Story by Jason Krysinski

Photos Courtesy Enix Brewing Co.

Homestead, Pennsylvania is a town steeped in hard-working, blue collar tradition. Not so very long ago, the rivers were lined with steel mills, and 8th Avenue bustled with local patrons running their daily errands. One of the most well-known shops was Levine Brothers Hardware.

Levine Brothers Hardware opened around 1935 after the building was purchased by the family. For more than ten years, the business prospered until a disastrous fire took its toll in 1947. The store was re-built in 1948 and reclaimed its previous success, as well as prominence, in the lives of the locals. Success continued through the decline of the steel mills and into the early 21st century, when Levine Brothers closed the doors for the final time in 2003.

For thirteen years, the building sat empty until it caught the eye of Anthony Rodriguez of A.M. Rodriguez Associates Incorporated. As the company had just been completing a nearby affordable housing project, One Homestead, the Levine Brothers building inspired a different type of project.

For the past several years, Anthony's son David, a Master Brewer, had been working and brewing in Spain, bringing together beer and American style cuisine. He and his wife conceived and created two highly regarded brewpubs; Fabrica Maravillas and Mad Brewing. In 2013, The Guardian, an esteemed United Kingdom newspaper, deemed Fabrica Maravillas to be one of the top 10 brewpubs in all of Europe.

Now, David would team up with his brother Victor, and the Rodriguez brothers would now bring some new hardware to the old Levine brothers store. The hardware at Enix Brewing is quite impressive and can be seen from the dining room. Shiny vats hold their carefully crafted concoctions, while the open kitchen cooks up Spanish inspired dishes. The building, now fully restored and renovated is ready for business.

ENIX HAS A *Bowling Alley?*

For leagues or the casual bowler with a beverage, Enix's top floor features eight refurbished lanes that are ready to roll!

Check out enix.beer/bowling for hours of operation and league information.





Since their opening, I have been to Enix a few times and I have sampled all their beers along with a good portion of their food. My favorite beer is the Holy Smoke Porter. A smoky, dark, and rich beverage that pairs nicely with their wood fired, meat lovers flatbread. I also enjoyed their bitter beer. It's called Bitter Steve, and named after their manager, Steve. From what I can tell, he really isn't bitter, and the beer isn't either. It's one of the best on the menu with excellent flavor of an English style bitter. If you are a fan of malty beers, this one is for you.

Their food is so tasty, that words can't do it any justice. One bite of the Spanish Stewed Oxtail and you will be hooked. The Beer Braised Baby Back Ribs are a mouthwatering, delectable treat. I recommend going hungry and trying to leave room for dessert. And if you don't have room, you need to take some of the Tarta De Santiago with you. This is their almond cake, that for me, made a fantastic late-night snack.

After tasting Enix beer and indulging on their food, one can envision a new tradition unfolding. A tradition of good times and good food with friends and family in a good old steel town.





Escape from the Ordinary

Stay at one of two luxurious inns and enjoy the experience of a lifetime featuring lavishly appointed guestrooms, casual and gourmet dining at award-winning restaurants, and indulgent spa services.



Tara - A Country Inn
724-962-3535 | Tara-Inn.com



Buhl Mansion Guesthouse & Spa
724-346-3046 | BuhlMansion.com

LODGING ~ DINING ~ SPA ~ EVENTS + GIFT CARDS AVAILABLE FOR ALL OCCASIONS

Starry sky photo workshops (Nightscapes) for groups and private events at state parks in northcentral PA.

Night sky photography lessons at Cherry Springs State Park since 2015.

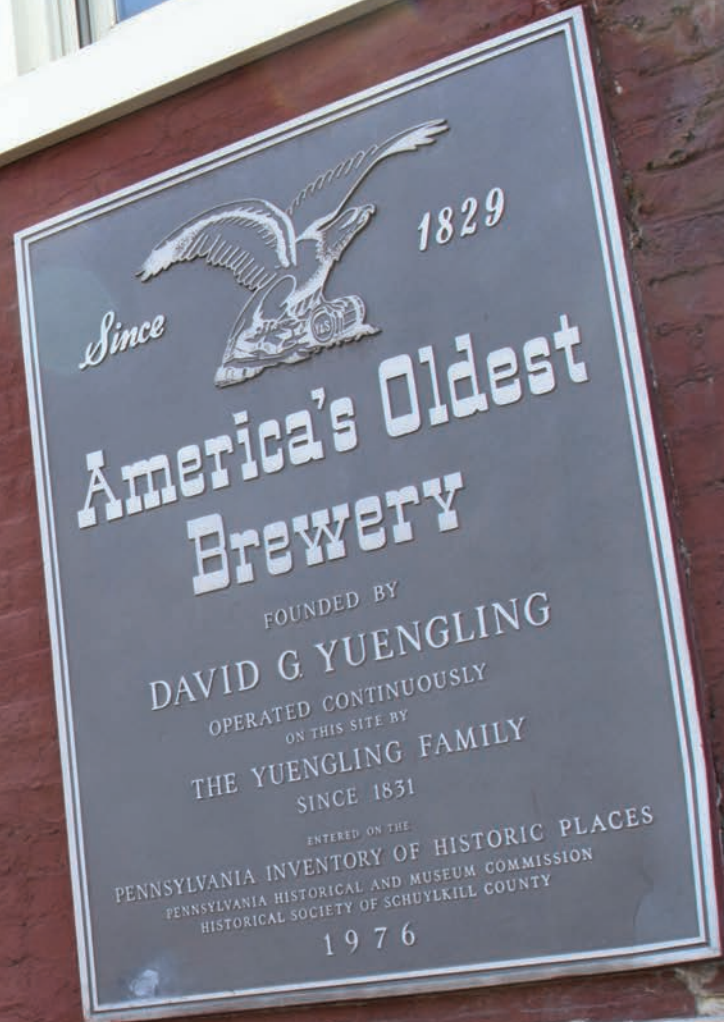
See samples at:
www.pbase.com/cwphoto/dark_sky

Curt Weinhold
PHOTOGRAPHY

www.curtweinholdphotography.com
814-320-1857 | cwphoto@zitomedia.net

This Southwestern PA Girl Recommends a Trip to Pottsville

Story & Photos by Gina C. Lynn



karëfoleyphotography / Shutterstock.com

If your travels should ever take you to the east side of Pennsylvania, be sure to schedule a trip to historic Pottsville, PA, or better yet, make a special trip to go there. Why? This is where you will find the Yuengling Brewery Company, America's Oldest Brewery.



I recently had the opportunity to tour the brewery located at 420 Mahantonga Street, Pottsville. The historic building, built in 1831, honors the family members and workers that have produced a variety of Yuengling products over the years.

Established in 1829, as the Eagle Brewery by David G. Yuengling, the operation is now in its 6th generation of ownership. On the day I toured the brewery, Richard "Dick" Yuengling, the current owner was on site, and took the time to speak to my group. I understand that it is not unusual to see Dick at the brewery, as he is a hands-on guy and is involved with daily operations. In addition to the brewery on Mahantonga Street, the Yuengling family also has a plant in Mill Creek, which is just a few miles away, and Tampa, Florida. The newer plant additions allow for

My tour guide was very knowledgeable and entertaining, as she led us through narrow walkways, step stairs and down to the "belly" of the building to the where workers had dug by hand caves used to ferment the beer long before refrigeration was available. Along the way, we stopped at the "Rathskeller", admired the stained-glass ceiling in the brew house and stopped by the bottling room.

We learned that the brewery survived during prohibition by producing "near beers", and by building and operating a dairy directly across the street. And in 1939 to celebrate the end of prohibition, the brewery produced a beer called "winner beer" and delivered a truckload to President Franklin D. Roosevelt.

Our tour concluded in the tasting room, where we were treated to several samples of Yuengling beer.



If you plan to visit the Yuengling Brewery, here are a few things to know. The tour is free to all ages. All visitors must wear completely closed-toe shoes. The tour involves a lot of walking and stairs and is not wheelchair accessible. This is a working brewery and visitors will notice sudden temperature changes throughout the tour, which lasts approximately an hour. A valid ID is required to sample Yuengling products.

I highly recommend that you visit America's Oldest Brewery to experience this piece of Pennsylvania history for yourself.

Cheers to you!



Gettysburg Getaway



MORE THAN JUST A
HISTORICAL JOURNEY

By Kim Guthrie

Photos Courtesy of Destination Gettysburg, except where noted.



My husband and I are not exactly what you would call "sightseers." Though we respect and honor the history associated with places, we don't actively seek them out—that's not really our thing, but we understand how it can be for others.

Instead, our preferences lie in being together and having fun in our own way, which generally means exploring the craft beer offerings and unique and delicious eats found in and around a cool little town. When the opportunity arose to visit Gettysburg and explore it beyond its obvious historical leanings, we jumped at the chance.



Now, anyone who knows anything about history, knows that Adams County is most widely known for the 1863 Battle of Gettysburg, where one of the largest and bloodiest battles during the American Civil War was fought across the fields and rolling hills of the town. Driving into town on that first afternoon was humbling as we passed the house where the first shot was fired to begin the battle. There is an obvious sense of history as one continues on toward the town proper and that feeling intensifies until it's almost eerie, knowing just how many people—and animals—lost their lives in this battle.

Yes, visitors and sightseers alike can experience all the incredible history associated with the battlefield, but Gettysburg is so much more than simply a historical place to visit and it begs a visitor to properly explore all that Gettysburg has to offer.

Experiencing Gettysburg was a novel one—and truthfully—probably one we normally shy away from because we incorrectly assumed that it was only a sightseeing destination. Yes, it is primarily known for its historical battlefield, but, as we quickly learned, this area boasts a wealth of activities beyond just those historic acres. Our winter Gettysburg getaway was just what we needed—an unknown place to explore with tasty treats to try, crafty cocktails to sip, and new people and places to experience.

Thank you, Gettysburg, for your warm hospitality and cheers until we return next time!





Editor's Note: The following photos document the exciting trip that Kim and her husband Jason recently took. There was so much to do and share that not all of it could fit in these pages! To read more about their adventures, visit PinpointPennsylvania.com.

LIBERTY MOUNTAIN RESORT: A WINTER ESCAPE IN ITSELF

Our winter escape trip began just down the road from Gettysburg in nearby Carroll Valley, at one of the region's most popular ski resorts – Liberty Mountain Resort – boasting a wide variety of slopes, lessons, and varied amenities to keep you warm and active, both indoors and out. Thousands of skiers, snowboarders, and snow tubers hit the mountain every year to partake in that fresh winter air and the adrenaline rush that the downhill provides.



Photo by Kim Guthrie

We were struck by the beauty of the four-story stone fireplace that begged us to sit down and snuggle under a soft blanket in front of its fire.



“Liberty caters not only to the skiers, but also to the non-skiers who can make a spa appointment and then have access to the indoor pool, sauna, and hot tub for the day. Parents fight over who gets to drop off the kids for the day so that they can enjoy a day being pampered,” says Adrienne Weikert, an employee who has worked at Liberty since she was 14 years old.

Photos Courtesy of Liberty Mountain Resort.

Bundle up and visit the number of outdoor fire pits located throughout the resort's outdoor areas.



We can confidently recommend the Bacon Wrapped Tater Tots and Poutine as delicious appetizers that preceded the hearty Reuben and Maryland street corn at the Eagle & The Owl.

Photos by Kim Guthrie



At the Mason Dixon Distillery, unique foods such as the shrimp and andouille hushpuppies serve as a delicious start to our meal. While I added shrimp to their roasted beet salad, Jason chose a barbacoa bowl special and both were incredibly delicious.

Photo by Kim Guthrie

CRAFT DRINKS & DELICIOUS EATS

Honestly, very few decisions are made without considering where we will eat and where we will have a drink first—we know what we like, and we stick to this simple equation for figuring out what we want to do together. All our date nights and weekends away become a mini version of our own unique episode of *Diners, Drive-Ins and Dives* as we seek out an area's best beer and food purveyors, so it just makes sense that we'd approach this trip no differently from countless others on which we've embarked.



Another beautiful spot located nearby at the end of an almost mile long driveway is the Hauser Estate Winery featuring beautiful views and a selection of in-house produced wine and Jack's Hard Ciders, as well as several local beers.



Photo by Kim Guthrie

The Thirsty Farmer Brew Works was our second stop of the first day, where we ordered two flights ranging from light to dark beer (stouts and porters being our personal favorites!) and these flights included almost all of their nine styles of beer offered.



Photo Courtesy of the Gettysburg Baking Company.

Be sure to visit the Gettysburg Baking Company who offers a variety of fresh breads, including their Adams County sourdough and a variety of well-crafted pastries, such as the delectable chocolate pear tart or simple homemade flavor of the apple tart, both of which we enjoyed for breakfast as we kicked off the second day of our trip.

SHOPPING & STROLLING THE STREETS

Second only to my love of craft beer and yummy food is my love of shopping. I jokingly tell friends that I was raised in a mall, but that's not far off the mark. My mother loves nothing more than a good bargain on a quality item and she certainly passed that love on to both of her daughters. Though our time spent exploring the neat little shops throughout the town was not spent seeking out a bargain, we immersed ourselves in all of the artsy goods that Gettysburg had to offer.



Just across a short hallway from the Gettysburg Baking Company sits Lark - A Modern Marketplace. Lark is what all other stores should aspire to be— it's colorful, witty, eclectic, and smartly arranged. Lark specializes in unique, handmade, and fair-trade goods from small businesses and artisans all over the world



Gallery 30 is a bit of a contradiction: the entire center of the space is comprised of display upon display of beautiful and ornate jewelry, while the outer perimeter is a mix of funky and functional handcrafted products and artsy decor produced by local artisans.

Finally, we toured the well-designed and recently redone museum, packed with original artifacts and interactive exhibits from the Civil War.



Plan Your Trip...

Plan a visit like we did that incorporates a bit of the history combined with what we like to do and utilize Destination Gettysburg (DestinationGettysburg.com) to help arrange your itinerary. Whether it's a summer weekend trip or a winter escape like ours, take the opportunity to fully immerse yourself in Gettysburg's history and small-town charm, while experiencing its ever-expanding craft beverage industry and vast culinary scene. Outdoor recreation opportunities also abound and will ensure that you return to Gettysburg time and again.

Indoor Adventures in the Cumberland Valley

By Aaron Jumper

Photos Courtesy of the Cumberland Valley Visitors Bureau

While home is most comfortable in the winter, I try to my best to avoid the cabin fever of staying in all the time. The Cumberland Valley region in south central Pennsylvania offers friends and family a number of entertaining options to explore. From history to educational to competitive, there's always something fun to do, while staying warm!

Along I-81 in Carlisle, you'll find tanks and helicopters along the outdoor path of the U.S. Army Heritage & Education (USAHEC), which is the premier research facility for U.S. Army history. As a veteran, it's interesting to see the experiences of soldiers from other wartimes and battles. The interactive indoor exhibit allows the rest of my family to get a sense of those experiences through basic training, a skydiving simulator, and more.

For a thrilling indoor adventure, we like to visit the Carlisle Sports Emporium, which offers indoor

go-karting, laser tag, virtual reality gaming, roller skating and an arcade. The space is great for families or just a date night, as they offer so much. In the spring and summer, they also have outdoor tracks, batting cages, and mini-golf.

Plan Your Trip...

For more information on indoor family fun, dining, and overnight accommodations, go to VisitCumberlandValley.com.



Winter Treats in the Lebanon Valley

By Mary Weigley

Photos Courtesy of Level Eleven Art Department

Winter is a great time for “foodies” to visit the Lebanon Valley. There are a number of foods that are special to the Lebanon Valley; handed down through family recipes.

Come and taste these unique foods that are only available here. Have you ever tasted Lebanon Bologna or Opera Fudge? If not, you don't know what you're missing!



Spend New Year's Eve in the Lebanon Valley and watch the Lebanon Bologna Drop. Where else can you see a sixteen-foot bologna dropped at the stroke of midnight! Enjoy samples of this tasty treat. Held in front of the Lebanon Farmers Market, 8th Street.

The Lebanon Bologna Fest and Winter Carnival is held the last Saturday in January at the Lebanon

Valley Exposition Center, 80 Rocherty Road, Lebanon. Sponsored by the Rotary Club of Lebanon, the fest is an all-day celebration of all things Lebanon Bologna. There is a bologna eating contest, fried bologna sandwiches and a beer garden, with bologna flavored beer. Snitz Creek Brewery's Seltzer Smokehaus ale will be on tap.

But what is Lebanon Bologna? This dark reddish meat with white speckles has a unique flavor. Pennsylvania German farmers on Lebanon County farms combined butchering, curing and sausage-making skills to create this unique lunch meat. In the 19th century, approximately a dozen bologna manufacturers made and sold their family bologna recipes including Brooks' Original Lebanon Bologna, the Eby Bologna Company, Weaver's Famous Bologna, Baum's Lebanon Bologna and the Palmyra Bologna Company. The only two remaining companies are Seltzer's Bologna in Palmyra and Godshall's Quality Meats in Northern Lebanon township. Godshall's manufactures Weaver's and Kutztown Brands.

Lebanon Bologna has been well-known for years and was a popular and in demand staple. Robert L. Eby, expanded his bologna manufacturing in 1905, by erecting four new smokehouses at his place of business. In 1908, George J. Seeger, bologna manufacturer of Avon, Pennsylvania produced fifteen tons of bologna in a week. One local newspaper headline of 1909 stated *Famed Bologna: Made in Lebanon, Home Product That is Getting A Reputation Over the World*. The makers of bologna also were well known. The *Lebanon Courier and Semi-Weekly Report* August 6, 1909 issue had the following story of a bologna record:

Dealer Brooks Makes 26,000 Pounds in Just Nine Hours

George T. Brooks, of 155 North Tenth street, the well-known merchant for years, and the oldest manufacturer of the famed Lebanon bologna, manufactured on Wednesday 26,000 pounds in nine hours on the Loudon Patent Bologna and Sausage Stuffer.

According to a 1909 news article in the *Lebanon Courier and Semi-Weekly Report*, George T. Brooks was one of

the oldest active bologna makers. His company was also "enjoying the greatest prosperity in the history of the business here." Brooks was erecting nine new smokehouses in 1909, doubling the number on his Tenth street property.

In 1901, Daniel Weaver was the largest manufacturer of Lebanon bologna according to an article in the October 9, 1901 issue of the *Lebanon Courier and Semi-Weekly Report*:

Large Manufacturer

Daniel Weaver, the largest manufacturer of Lebanon bolognas, which are a standard in the market, has recently purchased the factories and stock of Shaffer and Siegrist and Steiner and Co., of this city, and transferred them to his large plant at Avondale Nursery, north of the city. A few weeks ago he bought out a large Lancaster plant and also removed it to his central plant. This gives him a capacity of one car load, or about fifteen tons, a day, and this is hardly sufficient to supply the demand.

Harvey Seltzer began production of his family bologna recipe in 1902 in Palmyra, Pennsylvania and his company still operates today as Seltzer's Smokehouse Meats. Seltzer's is the world's largest producer of Lebanon Bologna and distributes worldwide. Of the many popular and prosperous manufacturers of Lebanon bologna, only Seltzer's and Godshall's remain in production today. You can no longer tour any of the bologna manufacturing plants. The products are available in local grocery stores. The best place to pick up Seltzer's products is at Black Swan Antiquities in Palmyra. Make sure you stop by the Visit Lebanon Valley office, 31 S 8th street, Lebanon and pick up the Shopping and Antiquing Itinerary, included on this trail is this shop and many others.



Another favorite treat, not made anywhere but Lebanon County, is the mysteriously named opera fudge. The best time of year to get this treat is between Thanksgiving and Valentine's Day. This sweet treat is a rich, creamy fondant coated in chocolate that tastes like no other candy.

The origin of the name opera fudge is unknown but there are local stories. One story is that German immigrants took chocolate-covered creams to operas at the Fisher Opera House (established when Fisher Hall was enlarged in 1891), which was located across the street from Wertz Candies, 718 Cumberland Street, Lebanon, and the candy became known as opera fudge. Opera fudge has been

around for generations, made from family recipes, such as the Van Winkle family and Ethel Lippert recipe. The earliest mention of opera fudge I found was in 1912. In the Lebanon Daily News, May 12, 1918, a Lebanon County soldier wrote home from France that he longed for "some of Dr. Charles Boger's Opera Fudge."

Wertz Candies have been making opera fudge since the store received their license in 1931. The shop owners were opening a franchise for a caramel corn shop but customers started asking them for opera fudge and bringing in homemade samples. Nora Wertz eventually created her own recipe which is still used today. Opera fudge is not like other fudge. The inside fondant is rich, creamy, and very sweet. This is coated with chocolate. Wertz makes their opera fudge in two flavors vanilla and peanut butter. The shop also has wonderful caramel corn.

After you have samples these treats, head outdoors for some exercise and fresh air. The Lebanon Valley has many great outdoor areas to enjoy. Explore fifteen miles of old railroad tracks on the Lebanon Valley Rails to Trails. If it has snowed recently, cross-country ski the trail. At the right time of the winter, you could see thousands and thousands of snow geese at Middle Creek Wildlife Management Area.



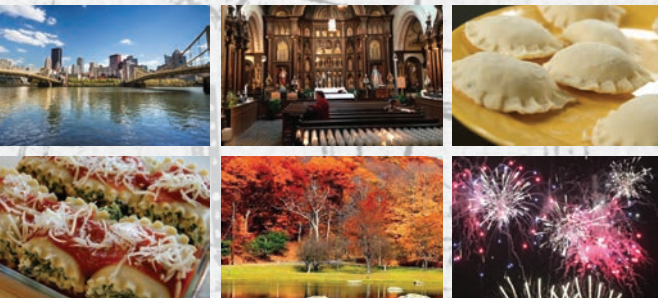
travel tip

Pick up the newly created Outdoor Guide at Visit Lebanon Valley or check it out online at VisitLebanonValley.com to find more great outdoor activities.





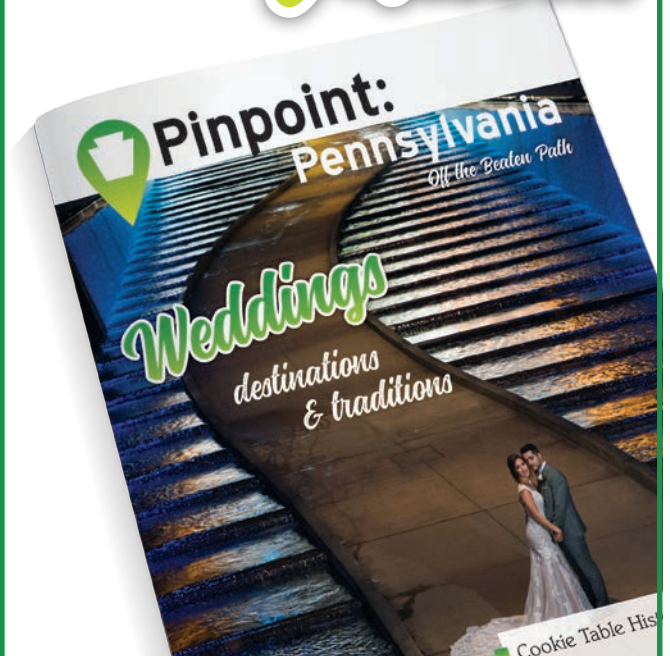
Custom tours of Pittsburgh and beyond



Experience the "Tourism Trifecta"
Knowledge, Experiences and Fun

To schedule your tour or for group rate information, contact Kim Adley at **412-298-0409** or visit online: www.passporttopittsburgh.com

Don't Miss...



Spring In Pennsylvania

From unique traditions to breathtaking picturesque backdrops, our Spring issue features weddings in Pennsylvania. Also, don't miss out on current industry trends and tips that might help make your perfect wedding more cost effective.

Subscribe today at
[PinpointPennsylvania.com!](http://PinpointPennsylvania.com)

Winter in the Laurel Highlands provides no shortage of beautiful mountain vistas, winter wonderland recreation, and plenty of activities!

If you and your friends and family are looking for an outdoor recreational winter experience that includes hiking, snowshoeing or cross country skiing on a relatively flat trail, a little known gem is the **Indian Creek Valley Trail.**

Beginning at Jones Mills on Route 31, just off the Donegal exit of the PA Turnpike, it's an easy 1 hour drive from Pittsburgh or Johnstown!





Experience a Winter Wonderland

By Melanie Fitzpatrick

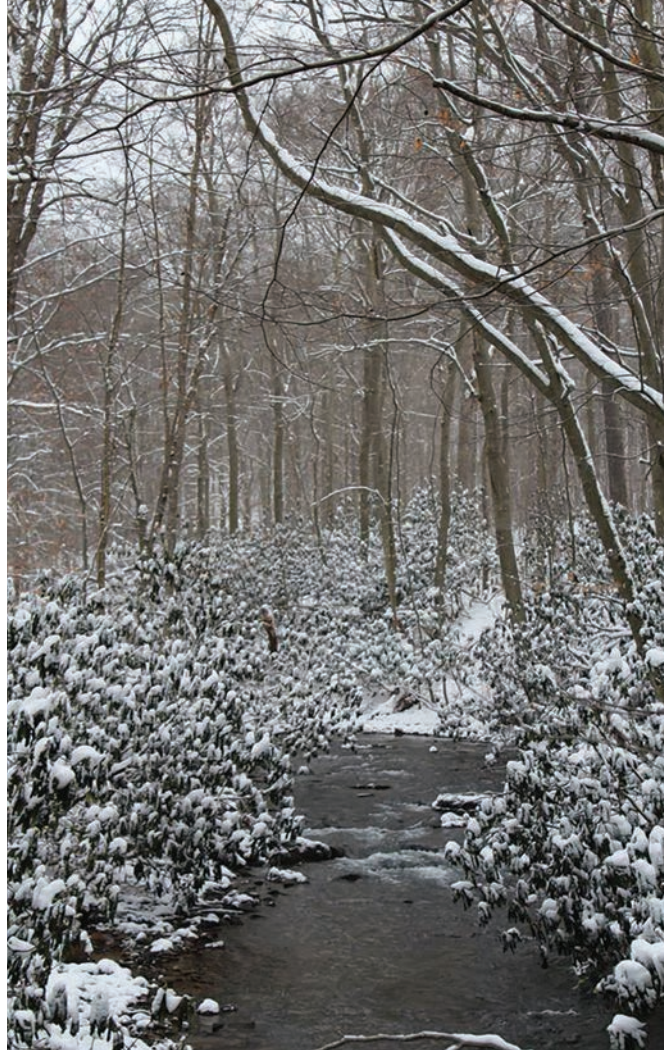
Photos Courtesy of Carla Ruddock, Mountain Watershed Association

The Indian Creek Valley Trail is open year round for activities including walking, biking, cross country skiing and even snowshoeing on certain sections. Plenty of amenities for food and beverage and trail access parking can be found in the Indian Creek Valley.

Currently the Trail is being constructed on a former railroad bed that was operated in the early part of the 20th century by the Indian Creek Valley Railroad. It was established in 1906 for Laurel Hill timbering operations and by 1910, 22 miles of railroad were complete from the Jones Mills to the Youghiogheny River, passing through the small towns of Champion, Melcroft, Indian Head and Mill Run that populate the Indian Creek Valley. By 1969 though, the railroad was abandoned due to the declining timbering industry and the shift in transport of coal from rail to trucking.

The ICV Trail construction is now complete for an 8 mile stretch where it runs parallel to the Indian Creek (Rt. 711) between Jones Mills and 1 mile south of Indian Head (Rt. 381). This portion of the trail is relatively flat, which makes it accessible for all levels of ability and very family friendly. In the winter, the trail is plowed for walking/jogging between Indian Head and Melcroft, but it is open for biking, skiing or snowshoeing from Jones Mills to Melcroft.

Portions of this section of the trail are owned/operated by the Mountain Watershed Association and by Saltlick Township. Fortunately, it is the goal of the Mountain Watershed Association to develop the entire length of the former 22 miles of railroad into a bike, hike and ski trail, eventually crossing the Youghiogheny River to join with the Great Allegheny Passage Trail system so that the Indian Creek Valley Trail could then serve as a spur to this popular trail linking Pittsburgh, PA and Washington, DC.



It is through the preservation efforts of a community based organization like The Mountain Watershed Association that we can experience the benefits of reclaimed land and fresh waterways from a previous industrial footprint.

If you would like to support and learn more about MWA's mission is to protect, conserve, and restore the Indian Creek Watershed, its communities and the Youghiogheny River Keeper, visit them at MTWatershed.com.



Photo by Margaret Muldoon



The creek itself starts high on Laurel Ridge as a trickle and ends in a deep wooded gorge flowing with white-water and waterfalls just before its confluence with the Youghiogheny River near Ohio Pyle. This stunning 5 mile section is currently under development and begins further south at Camp Christian on the banks of the Indian Creek Reservoir at Mill Run on Rt. 381.

Known as Indian Creek Gorge, it provides some of the most breath taking scenery of the Laurel Highlands. It is also renowned for its whitewater, exceptional flora and fauna and is habitat for some of the last remaining wild trout in western PA!

Be sure to bring your camera as there are numerous scenic vistas along this route.

This part of the trail system belongs to the Municipal Authority of Westmoreland County. The MAWC generously allows biking and hiking access, and can be exceptional for cross country skiing when covered in snow.

A couple of important things to know about this section; it becomes remote and the trail can be more rugged, so be sure to dress accordingly, carry enough water and food for a 10 mile

round trip (or less), if you wish to travel to its terminus at the Youghiogheny River. Be advised there is no vehicular access to the bottom of the gorge and most likely you will not have much cellular coverage. Keep in mind, you will need to pack out any trash and practice Leave No Trace principles in this area.

Life is a journey through the glorious seasons of nature and life! Treat yourself, your family and friends to a bountiful slice of nature's winter expression. Come explore the natural beauty of the Indian Creek Valley in western PA!

Plan Your Trip...

For a Trail Map and area guide, including trail head parking, Visit IndianCreekTrail.com. Download a trail map and start planning your next outdoor scenic venture!



unique places

Bucket List Experience:
Groundhog
Day in

PUNXSUTAWNEY

By Danielle Taylor

Photo by Kyle Yates Photography



Photo Courtesy of PennLive.com

By the time Punxsutawney Phil emerged from his stump at sunrise last February 2, I had been standing in the cold on Gobbler’s Knob for nearly four hours, eagerly awaiting this moment. Roughly 18,000 others surrounded me there, and thanks to the newscasts from all the major networks on site, millions more around the world could watch live as the Prognosticator of Prognosticators looked for his shadow.

The top-hatted and tuxedo-clad members of his Inner Circle set him on his stump and leaned in for word of his forecast. In the midst of the crowd, I found myself leaning in too, anxious to hear the groundhog’s message.

As a relatively new resident of Pennsylvania, 2018 was my first opportunity to celebrate Groundhog Day in Punxsutawney, and I jumped at the chance to go all in. Rusty Snyder, owner of the Double Diamond Deer Ranch in Cook Forest, is a fellow Phil aficionado, and we did our best to make the most of this quirky holiday.

Our three-day celebration started on February 1 at the Members Reception, an exclusive event just for official

members of the Groundhog Club. Phil and several members of the Inner Circle were there, and I gladly waited in line for a photo with the world’s most famous forecaster while snacking on groundhog cookies and punch. From there, we headed to the entertaining Groundhog Banquet where we got our first taste of Phil’s international appeal. People in the audience had traveled to Punxsutawney from Saudi Arabia and Japan for the opportunity to get up ridiculously early and stand outside in the cold the next morning — in the middle of the woods, in the middle of the night, and during the middle of winter, no less — just to take part in the legend.

Groundhog Day

101

After a few quick hours of sleep, we woke up around 2 a.m. on Groundhog Day to head out for the trek to Gobbler's Knob. The gates at the Knob open at 3 a.m., and Phil phans can either take a shuttle from downtown or hike up the hill, just as the first hardy believers did in 1887. Now, however, the faithful followers can enjoy a wildly entertaining show for the hours leading up to Phil's sunrise prognostication. Inner Circle members Dan "Moonshine" McGinley and Dave "Thunder Conductor" Gigliotti kept the crowd pumped on the Knob with heart-pounding music and lots of local talent on stage, and as the big moment approached, fireworks went off to commemorate the occasion. Then the full Inner Circle came on stage, and all the news cameras fired up as the crowd quieted down.

Inner Circle president Bill Deeley knocked on Phil's stump at the center of the stage with his acacia cane, and handler A.J. Dereume reached inside to bring Phil out to his adoring crowd. According to legend, the current president is the only one who can interpret Phil's prediction in Groundhogese, and only if he is holding the acacia cane. Still, everyone on stage and in the crowd quieted down when Phil made his prediction, as if hoping to hear the forecast straight from the groundhog's mouth. After a moment of listening intently, Deeley directed vice president Jeff "Fair Weatherman" Lundy to read the correct scroll of the two they had prepared and announce Phil's official prediction to the crowd. Six more weeks of winter!

The legend of Groundhog Day has its roots in Candlemas, a holiday brought over to the New World by European settlers. According to tradition, if a badger or hedgehog emerged from hibernation to a sunny day on February 2, therefore casting a shadow, winter would last several more weeks. European newcomers found groundhog Punxsutawney Phil to be the best replacement for his European forebears as the wisest weather-predicting animal in America.

On February 2nd, Phil comes out of his burrow on Gobbler's Knob in front of thousands of faithful followers from all over the world to foretell the weather for the rest of the winter. This is officially known as Phil's prognostication. If he sees his shadow, there will be six more weeks of winter. If not, an early spring is on its way.

The dapper gents wearing the tuxedos and top hats are members of the Inner Circle of the Groundhog Club, and they take care of and feed Punxsutawney Phil and also perpetuate and protect his legend. Phil makes his prediction in Groundhogese to the current president of the Inner Circle, who then shares it with the world.

Groundhog Day has been celebrated in Punxsutawney with a trip up to Gobbler's Knob since 1887. Furthermore, the Punxsutawney Phil you see now is the same one who made his prediction on the first Groundhog Day back then. Each September at the Groundhog Picnic, the Inner Circle gives him a sip of the magical Elixir of Life, which grants him an additional seven years of life.

Afterward, Phil's handlers whisked him off to the main building at Gobbler's Knob for photo ops with his fans. Rusty and I chatted with a few people, and I got a photo with Jim Cantore and Jen Carfagno from the Weather Channel. We left the Knob and went back into town for a tasty buffet breakfast at the Eagles Club, a few fun events at the Celebration Tent in Barclay Square, souvenir shopping at the Groundhog Club Headquarters and Official Souvenir Shop at the Chamber of Commerce, the craft show at the community center, and a visit to the Weather Discovery Center. The Groundhog Club and other businesses around Punxsy had organized tons of other fun things to see and do for the rest of the day, such as Groundhog Day weddings at the civic center, a showing of the Groundhog Day movie at the community center, a tour of the Phantastic Phil sculptures around town, and an all-request dueling pianos show at The Burrow. However, Rusty and I were ready for our naps, so we each drove home to catch up on our rest before coming back the next day.

A friend out west connected me with someone he knew who had traveled from Colorado to Punxsutawney with her husband, and we met up on February 3 at the s'mores cookout in Barclay Square. Lisa and Ricky Nguyen had long been fans of Punxsutawney Phil and Groundhog Day from afar, so once they were here, they went all in.

"Groundhog Day has been on my bucket list for a while," Lisa said. "It's so quirky — I mean, who wakes up at 3 a.m. to see a rodent prognosticate? Part of it was also the curiosity — does Punxsutawney REALLY turn into a party town for this event? And, of course, who couldn't pass up on the opportunity to honor the cute, adorable namesake creature?"

While in town, Lisa and Ricky attended the Groundhog Club's Members Reception, looked all around town for as many Phantastic Phil sculptures as they could find, participated in the Groundhog Day scavenger hunt, ran in the Groundhog Day 5K, sang along to the





Photo Courtesy of Punxsutawney Groundhog Club

"'Pennsylvania Polka' and 'I Got You Babe' from the movie at the dueling pianos performance, and of course, joined in the fun at the prognostication. We all ended our multi-day celebration at the Groundhog Ball, an elegant event attended by members of the Inner Circle and Phil himself.

"My trip to Punxsutawney for Groundhog Day 2018 has truly become a highlight of the year," Lisa shared, looking back on the event several months later. "I gush that it was more memorable than our honeymoon. I mean, how often do you get to celebrate such a fun, quirky holiday in the perfect small town? All in the name of an adorable critter?"

Fortunately, you can celebrate Groundhog Day every February, and you can visit Punxsutawney and see Phil in his Burrow at the town library year round. The Punxsutawney Groundhog Club is also hard at work developing a new visitor center with interactive displays and a theater at Gobbler's Knob, currently scheduled to open in summer 2019.

When you come to visit, be sure to enjoy the true spirit of the holiday and the legend. As one of the members of the Inner Circle noted at last year's banquet, "There are a lot of serious things in this world. Groundhog Day isn't one of them."

Plan Your Trip...

Book your lodging early! Punxsutawney is a small town and rooms fill up well in advance of Groundhog Day each year, but you can find great nearby options in Brookville, Cook Forest, Clarion, Brockway, East Brady, Foxburg, and more. Check VisitPAGO.com for listings.

Plan to stay for several days! Events start a week before the prognostication, and the whole town gets in on the fun.

Get your tickets! While the prognostication is free, you need a ticket to get into events like the members reception, banquet, ball, dueling piano performance, and more, so watch Groundhog.org for updates.

Head to the Knob early! THOUSANDS of people will be waiting for the shuttle buses and walking up the hill, and the pre-prognostication party is tons of fun, so give yourself plenty of time to enjoy the full event.

Layer up! It's cold here in February, especially at the top of Gobbler's Knob. Wear several warm layers of thermal underwear and fleece plus a windproof outerwear to stave off the cold, and pack plenty of air-activated body warmers, such as HotHands or Grabbers, to keep your hands, toes, and body warm in the chill.

For more information on Punxsutawney Phil and Groundhog Day, go to VisitPAGO.com or call (814) 849-5197.



Photo Courtesy of Punxsutawney Groundhog Club

Work Hard...



Play Hard.



Find us on
Social Media!



www.bridgetopittsburgh.com

"YOUR CONNECTION TO
CAMBRIA COUNTY"



THE MAKING OF A PENNSYLVANIA HOLIDAY ICON

Story by Jason Krynski

In 1982, long before the concept of viral videos became part of our collective vernacular, a commercial took the people of Pennsylvania by storm.

For most Pennsylvanians, the Eat'n Park Christmas tree commercial is one of the longest standing holiday traditions.



In the early 80's, the Eat'n Park restaurant chain was growing rapidly. CEO, Jim Broadhurst, wanted to find a way to thank their patrons. He approached Ketchum Advertising and tasked them with creating a video holiday card that would last for twenty years. Sounds simple right?

Well, as with most creative processes, it takes time to find perfection. It requires the right amount of energy and attention to detail and sometimes the right amount of luck. Craig Otto and Cathy Bowen, of Ketchum, came to be the duo that would take on this challenge.

A few weeks passed, many ideas were turned down and it was becoming apparent that only a special something could capture the heartfelt message that Jim was looking to convey. One fateful Sunday morning,

Craig and Cathy were able to capture just such magic. As Craig sat looking a sketch of an animated star, he wondered how the star gets on top of the Christmas tree. He decided that the star would need a helping hand to get to the top of the tree. Craig shared his thoughts with Cathy. While Craig worked on the now iconic animation of the big tree bending down to help the little struggling star, Cathy crafted a simple, but timeless message.

It's a message that rang true in 1982, that in 2018 may even ring truer. A message of love, of cooperation, a message of community, and the message of the holidays. As that tree bends down to pick up that star and both they begin to glow, we can all feel that same glow within us.. As, *"We hope that special lift you get this holiday season lasts the whole year long."*

Happy Holidays!

Here's hoping the special lift you get this holiday season lasts all year long.



TREE TREATS! THEN

The Christmas tree was the first to be featured in a series of flip book-style kids menus that Eat'n Park produced in the 1980s. Browse through the 12 and under dishes on one side, or turn it over to flip through an animation sequence which plays out the scenes from the commercial.

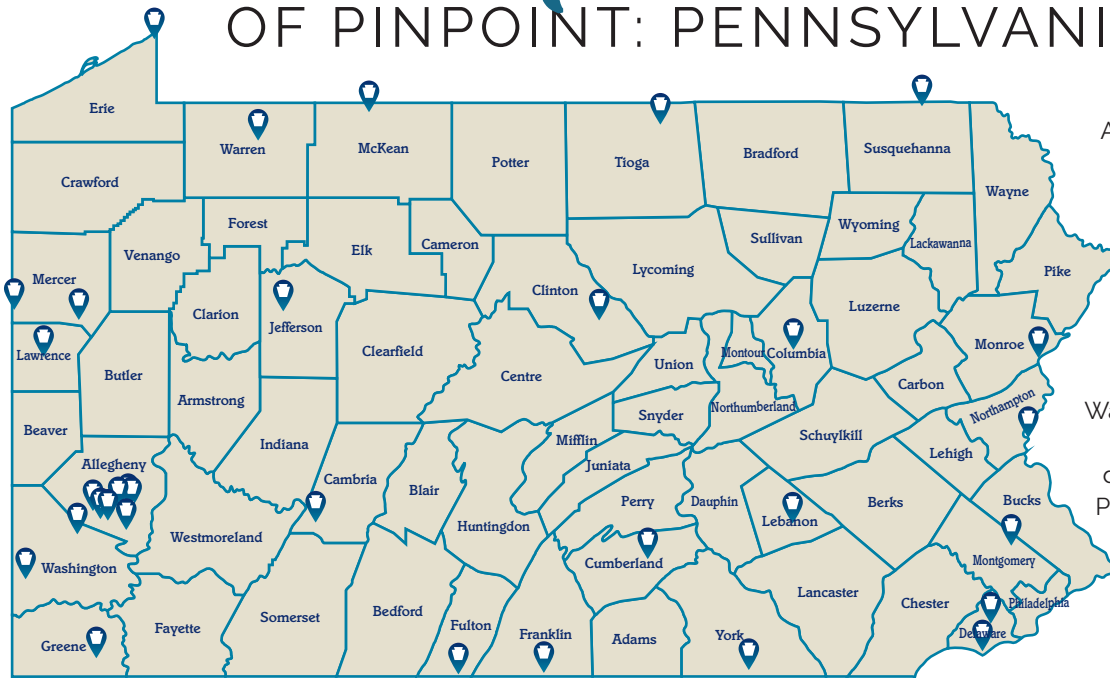
AND NOW

Today, the beloved tree graces many great gift items, including these beautiful freshly baked cookies, which can be ordered at SmileyCookie.com



Get Your Copy

OF PINPOINT: PENNSYLVANIA!



As each issue is released, you can pick up your complimentary copy of Pinpoint: Pennsylvania from any of our Distribution Partners located throughout the state.

Want Pinpoint: Pennsylvania delivered right to your door? Subscribe today at PinpointPennsylvania.com, and don't miss an issue!

Allegheny National Forest Visitors Bureau [Bradford](#)
Boardroom Spirits Distillery [Lansdale](#)
Bottle Works [Johnstown](#)
Candlewood Suites Grove City - Outlet Center [Grove City](#)
Clinton County Economic Partnership [Lock Haven](#)
Coldwell Banker Real Estate Services | South Hills Office
[Mt. Lebanon](#)
Columbia-Montour Visitors Bureau [Bloomsburg](#)
Cumberland Valley Visitors Center [Carlisle](#)
Curves [Carnegie](#)
Destination Delco [Media](#)
Enix Brewing Company [Homestead](#)
Hampton Inn & Suites Grove City [Grove City](#)
Holiday Inn Express Grove City (Outlet Center) [Grove City](#)
Lawrence County Tourist Promotion Agency [New Castle](#)
Pennsylvania Great Outdoors Visitors Bureau [Brookville](#)
PA Welcome Center I-90 West [North East](#)

PA Welcome Center I-80 East [West Middlesex](#)
PA Welcome Center I-70 East [Claysville](#)
PA Welcome Center I-79 North [Mount Morris](#)
PA Welcome Center I-81 North [Greencastle](#)
PA Welcome Center I-70 West [Warfordsburg](#)
PA Welcome Center I-83 North [Shrewsbury](#)
PA Welcome Center I-95 North [Linwood](#)
PA Welcome Center I-78 West [Easton](#)
PA Welcome Center I-80 West [Delaware Water Gap](#)
PA Welcome Center I-81 South [Great Bend](#)
PA Welcome Center Rt 15 South [Tioga](#)
Ron's Hair Styling [Homestead](#)
Spoonwood Brewing Company [Bethel Park](#)
Visit Lebanon Valley [Lebanon](#)
Warren County Visitors Bureau [Warren](#)
Washington County Chamber of Commerce [Southpointe](#)
Yoli's Cucina & Craffthouse [Jefferson Hills](#)

Join Our Distributor Network!

Join Pinpoint: Pennsylvania's group of Distribution Partners and provide an added amenity to your visitors and customers, plus qualify for special discounts and promotions! For more information, contact us today at info@pinpointpennsylvania.com

PENNSYLVANIA CRAFTED BEERS & EATS



Our 12-tap delivery system is filled with the finest variety of flavorful handcrafted concoctions. Also enjoy wine on tap, local mead, cider, and spirits, along with a full menu including wood-fired pizza and house smoked meats. Whether you take home of growler or enjoy a draft while sitting at our bar, Spoonwood Brewing Company knows what matters to craft connoisseurs everywhere.

SPOONWOOD
BREWING COMPANY

5981 BAPTIST ROAD / PITTSBURGH, PA 15236 / SPOONWOODBREWING.COM

GETTYSBURG *inspired*

FUN FOR ALL SEASONS!

Experience first tracks on the slopes, early morning horseback rides, adventures through history, the Adams County Pour Tour beverage trail across the countryside, camping under our stars (and stripes), and farm-to-table dining to captivate any foodie. All closer than you think, in Gettysburg, Pennsylvania.

MAKE YOUR OWN HISTORY

DESTINATION
Gettysburg!
ADAMS COUNTY, PA



Plan your adventure with our My Gettysburg app!



Find your inspiration at DestinationGettysburg.com or call 800.337.5015 for your free travel planner.